



NORTH INDUSTRIAL ZONE



INVESTIRAJTE U PANČEVO

INVEST IN PANČEVO

CITY OF PANCEVO

GEOGRAPHIC POSITION



44° 54' 00" N

20° 40' 00" E

Coordinates of Pančevo



77m

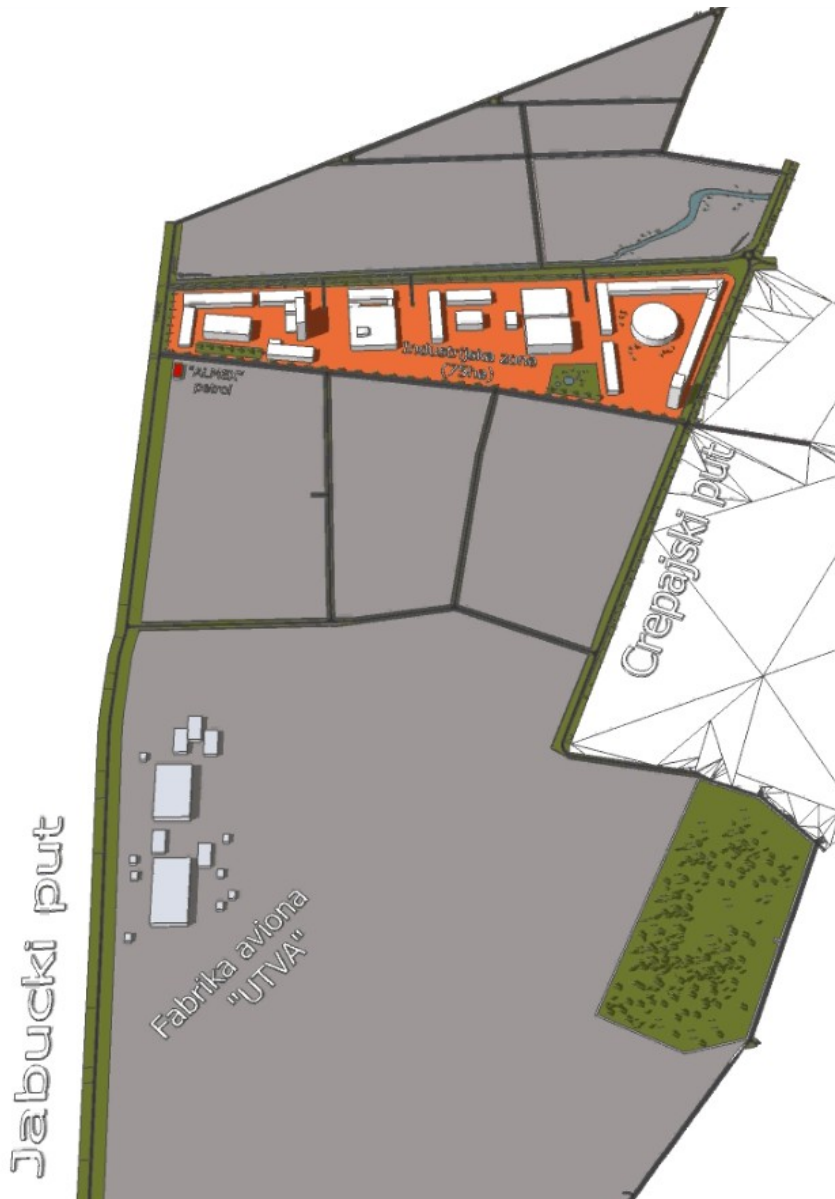
Elevation



INFRASTRUCTURE LINKS



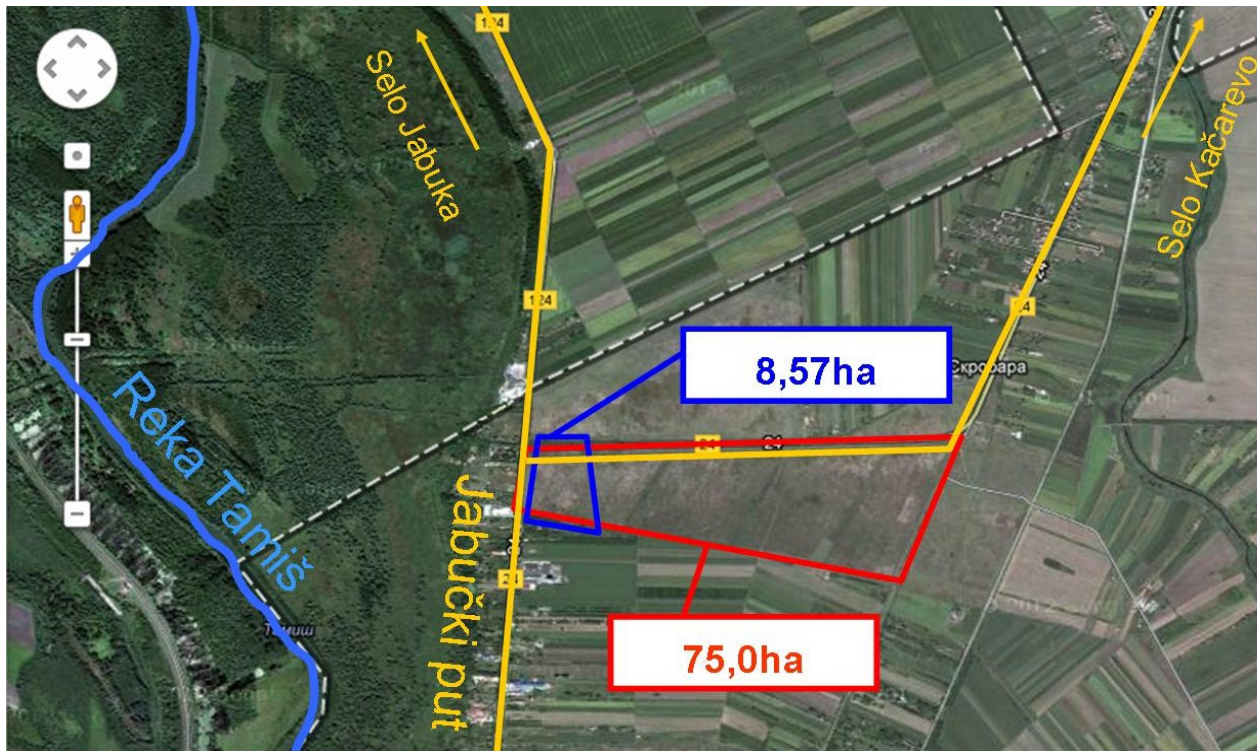
NORTH INDUSTRIAL ZONE



Basic features

- Greenfield location encompassed by General town planning within which the city of Pančevo owns **75 ha** of land as its property;
- Access to the state road of the second class Ečka – Kovačica Pančevo (Jabučki put);
- Surrounded by a **municipal road** and by the **international railroad Belgrade – Pančevo – Vršac – Romania**.

NORTH INDUSTRIAL ZONE - Position



Distance:

- 5 km from Pancevo City center
- 8 km from “Danube” Port
- 18 km from Belgrade
- 30 km from international airport “Nikola Tesla”
- Access to the state road of the second class

INVESTIRAJTE U PANČEVO

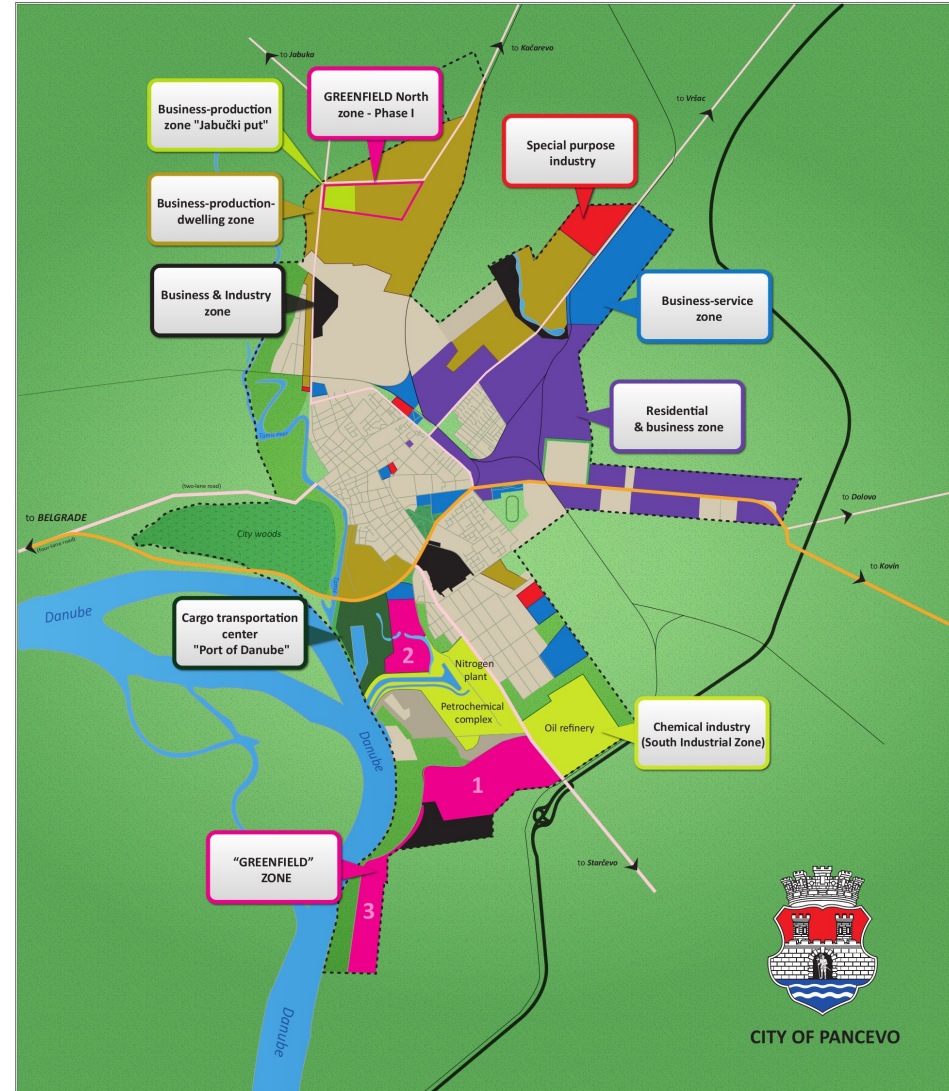
INVEST IN PANČEVO

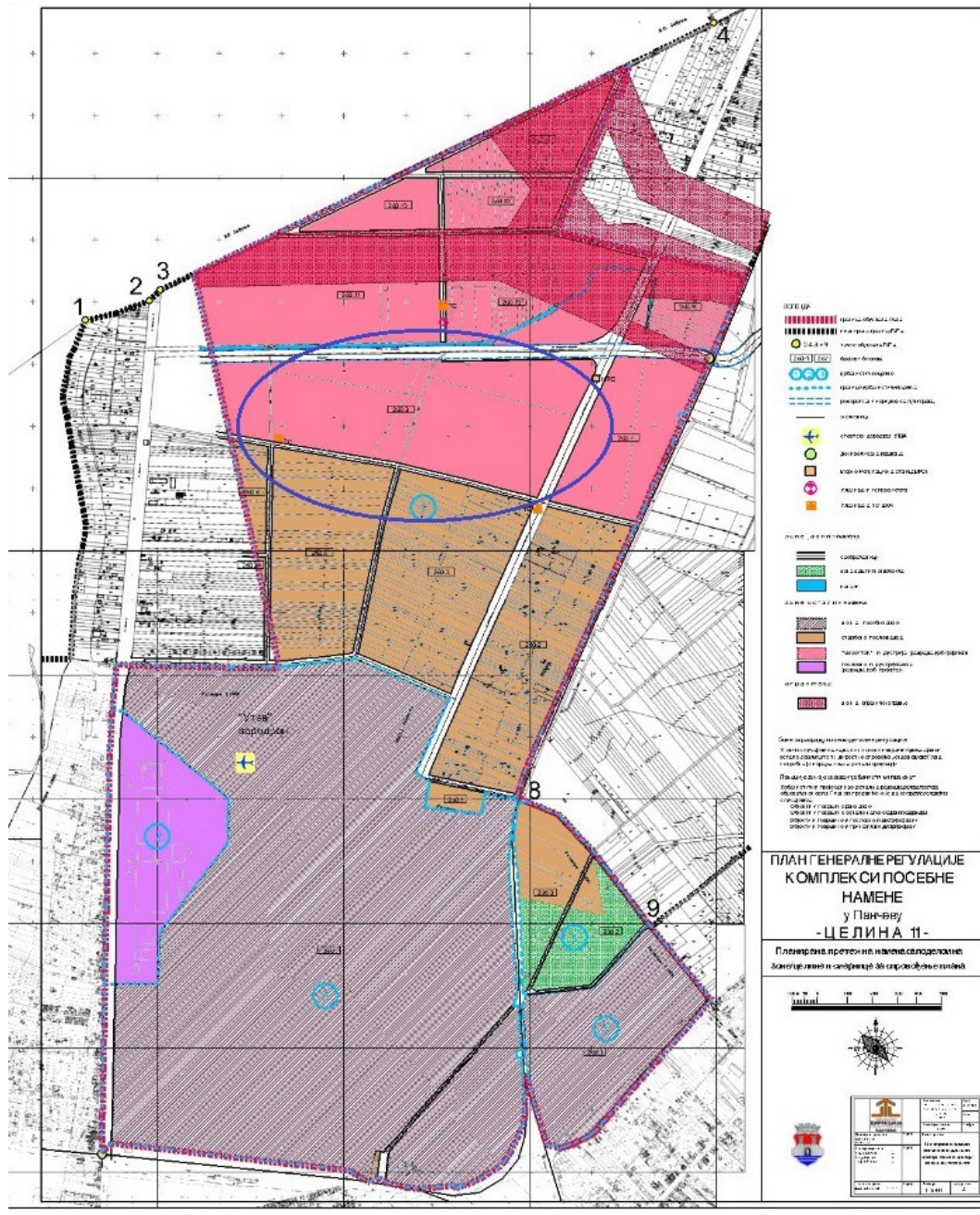


NORTH INDUSTRIAL ZONE

Planning documentation:

- 1. General regulation plan Section 11** – a complex for special purposes “The Official Gazette of the City of Pančevo” No 35/2012) – of 67 ha in size. According to this document, the plan envisages the construction of all types of industrial and production facilities of small and medium-sized enterprises, that is for all types of small business purposes the operations of which will not have negative influence on close and wider environment.
- 2. General regulation plan 4a** – Karaula with Jabučki put road and Section 4b – Starch industry (Skrobara) which is in the final phase of approving - 8,57ha in size.



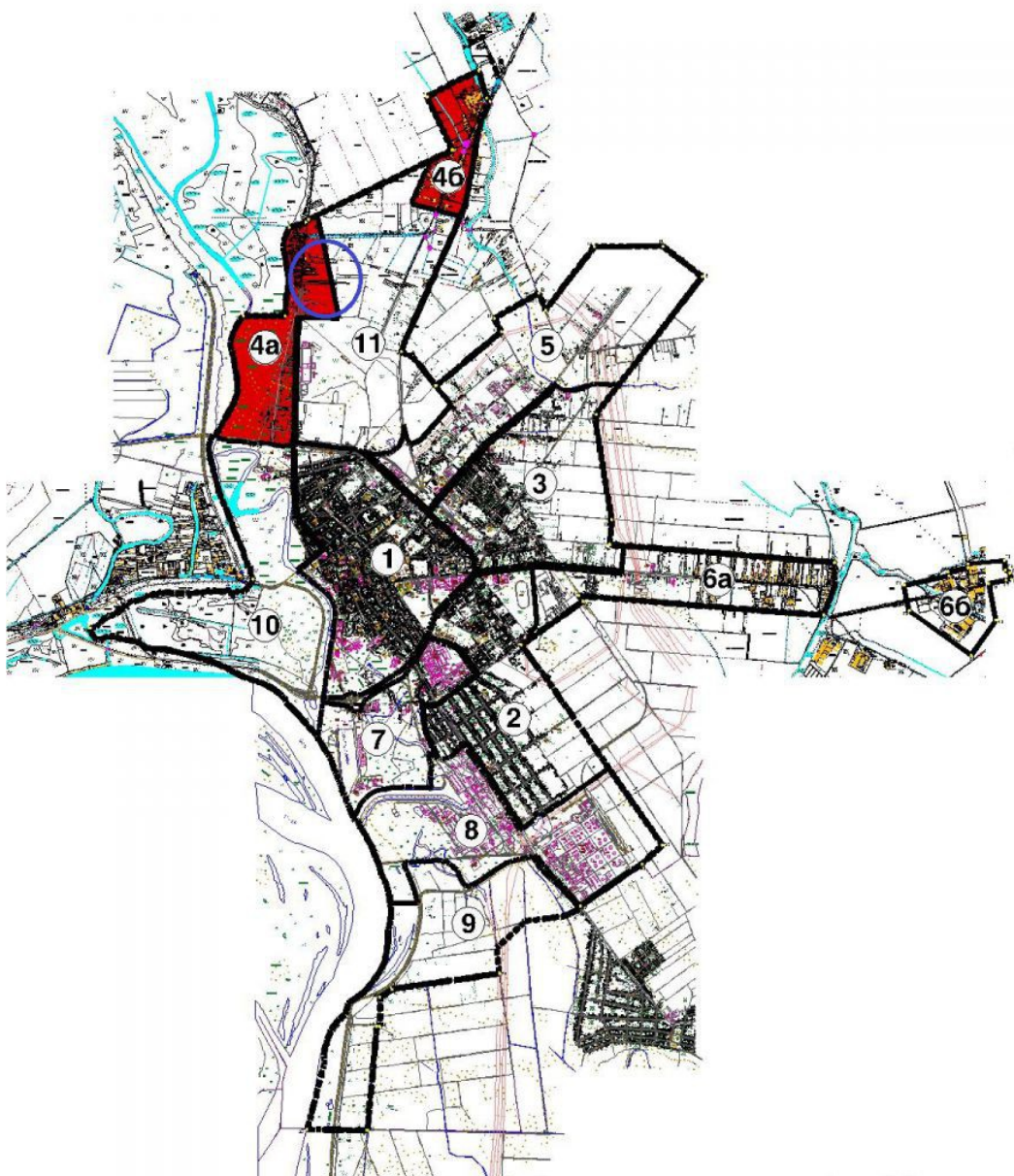


Greenfield industrial zone included in the General regulation Plan, Section 11

Special purpose complexes in Pančevo (Official Gazette of the City of Pančevo 35/2012)

- 67 ha in size owned by the City of Pančevo -



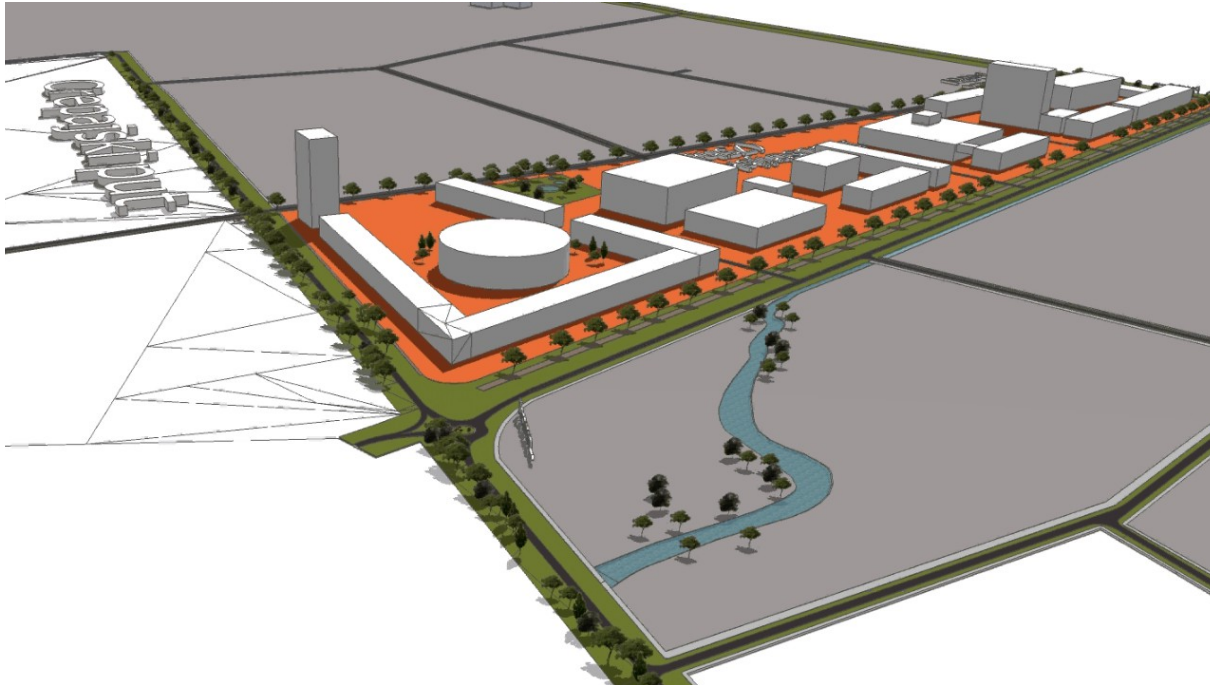


**GRP Section 4a – Karaula with
Jabučki put and Section 4b –
Starch industry (Skrobara)**

- 8,57 ha the property of the city -



NORTH INDUSTRIAL ZONE



Investment opportunities

The construction of all types of industrial and production facilities of small and medium-sized enterprises and for all types of purposes in the area of small-sized industry the functioning of which will not have any negative influence on close and wider environment is planned in this zone

INVESTIRAJTE U PANČEVO

INVEST IN PANČEVO



NORTH INDUSTRIAL ZONE - Surroundings



There is military industry “UTVA Avioindustrija” Pančevo as well as a substantial number of building, agriculture, road cargo transportation enterprises in the close vicinity of this Greenfield location. The development of the North industrial zone enables existing and successful small and medium-sized enterprises in the zone and in close vicinity (around 50 enterprises, out of which there are 2 big and 4 medium-sized ones) to enlarge their production, namely business activities and it also enables the arrival of new investors and new employments.



NORTH INDUSTRIAL ZONE - Plans



ГРАД ПАНЧЕВО



Партнери:



Буди део плана!

СТРАТЕГИЈА РАЗВОЈА ГРАДА ПАНЧЕВА 2014-2020

Укључи се на

www.pancevo.rs



facebook.com/pancevograd

The development of Greenfield zones has been recognized as priority of “Strategy for Development of Pančevo Municipality for 2007-2025 period” and it will be a priority project of the city of Pančevo in new roof strategic document which is being crated (Audit of the Strategy for the period 2014 – 2020 which is co-financed by the Province Secretariat for Interregional Cooperation and Local Self-Government).

NORTH INDUSTRIAL ZONE - Plans

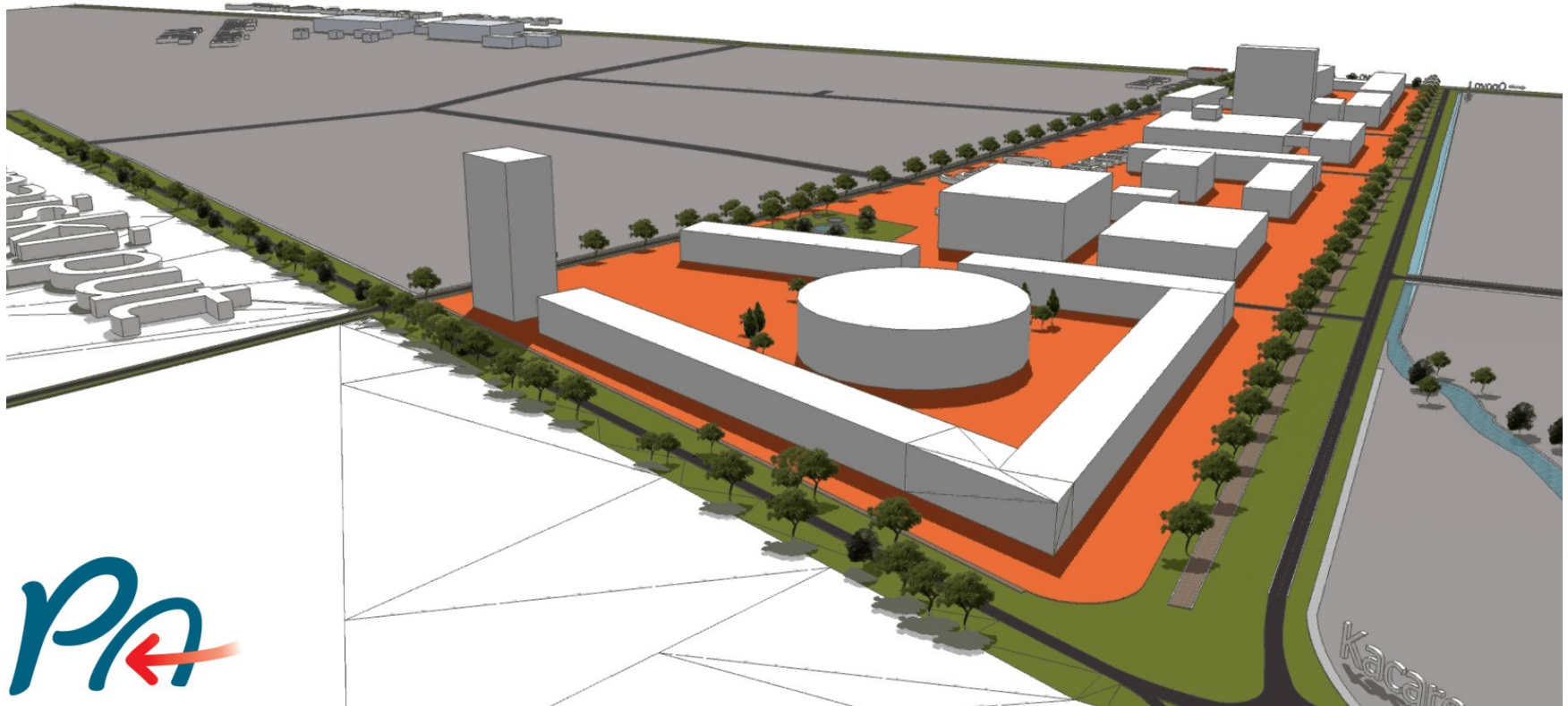


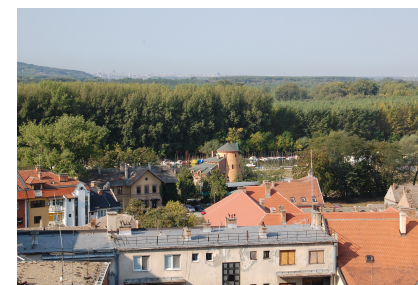
This zone is exceptionally well located because conditions for the construction of the state road of the first class M24, which will directly the North industrial zone, will be met **after the construction of the Chinese bridge (Zemun - Borča)**. M24 will be a connection between Belgrade and Novi Sad and it will be connected to the main road to Vršac – Romanian border.



NORTH INDUSTRIAL ZONE - Plans

Activities regarding infrastructural works in the business zone are underway and they will meet preconditions for starting business activities and therefore to offer new professional future to qualified professionals who lost their jobs through recent privatizations and to new unemployed qualified persons who are registered with the National Employment Service.





INVESTIRAJTE U PANČEVO

INVEST IN PANČEVO



City of Pančevo

Trg kralja Petra I 2-4
26000 Pančevo

Phone: +381 13 308 830

Fax: +381 13 373 211

e-mail: grad@pancevo.rs, ler@pancevo.rs

web: www.pancevo.rs