



CITY OF PANČEVO

CITY PROFILE

Serbia - Vojvodina - South Banat

City of possibilities.



“The Danube flows into the Tamiš
From all the seas, from all the oceans,
Pančevo - that’s when you get back
to your heart one day.”

Miroslav Antić



A WORD FROM THE MAYOR

Dear Sirs and Madams,

The pages before you contain the “Profile of the City” publication, wherein we would like to present the city of Pančevo – a city the favorable geo-strategic position, infrastructure, economic tradition and current economic activity of which are an assurance of your successful business activities, whilst its rich cultural offer, network of education institutions and opportunities for taking up sports and recreation make it a pleasant place to live in for all family members.

Pančevo is located in South Vojvodina and is the administrative, cultural and economic center of Southern Banat. It is only 18km away from the capital of the Republic of Serbia, thus making the market accommodating nearly two million people rather accessible, whilst its extraordinary position is mirrored in the access to three rivers, as well as in Corridor 7 (Danube transversal), direct vicinity of Corridor 10 and international airport “Nikola Tesla”.

In the course of its long and rich history, Pančevo has always represented an important trade, crafts and industrial center, and today it has diverse economic structure based on agriculture and industry. Local self-government is developing partnership relations with all who intend to or are already making business in Pančevo, implementing incentives and overviewing needs and problems in dialogues with representatives of business community. Priority in work of public services is continuation in administration modernization, facilitation of procedures and achievement of higher working efficiency.

The pages before you contain important information on what makes the City of Pančevo a logical choice for continuation or development of your business. In addition, you will find all contacts of City Administration of Pančevo, which can help you to achieve that. Use them; call us to help you in fulfilling your business goals for the benefit of Pančevo citizens.

Welcome to Pančevo!

Mayor
Pavle Radanov



Contents:

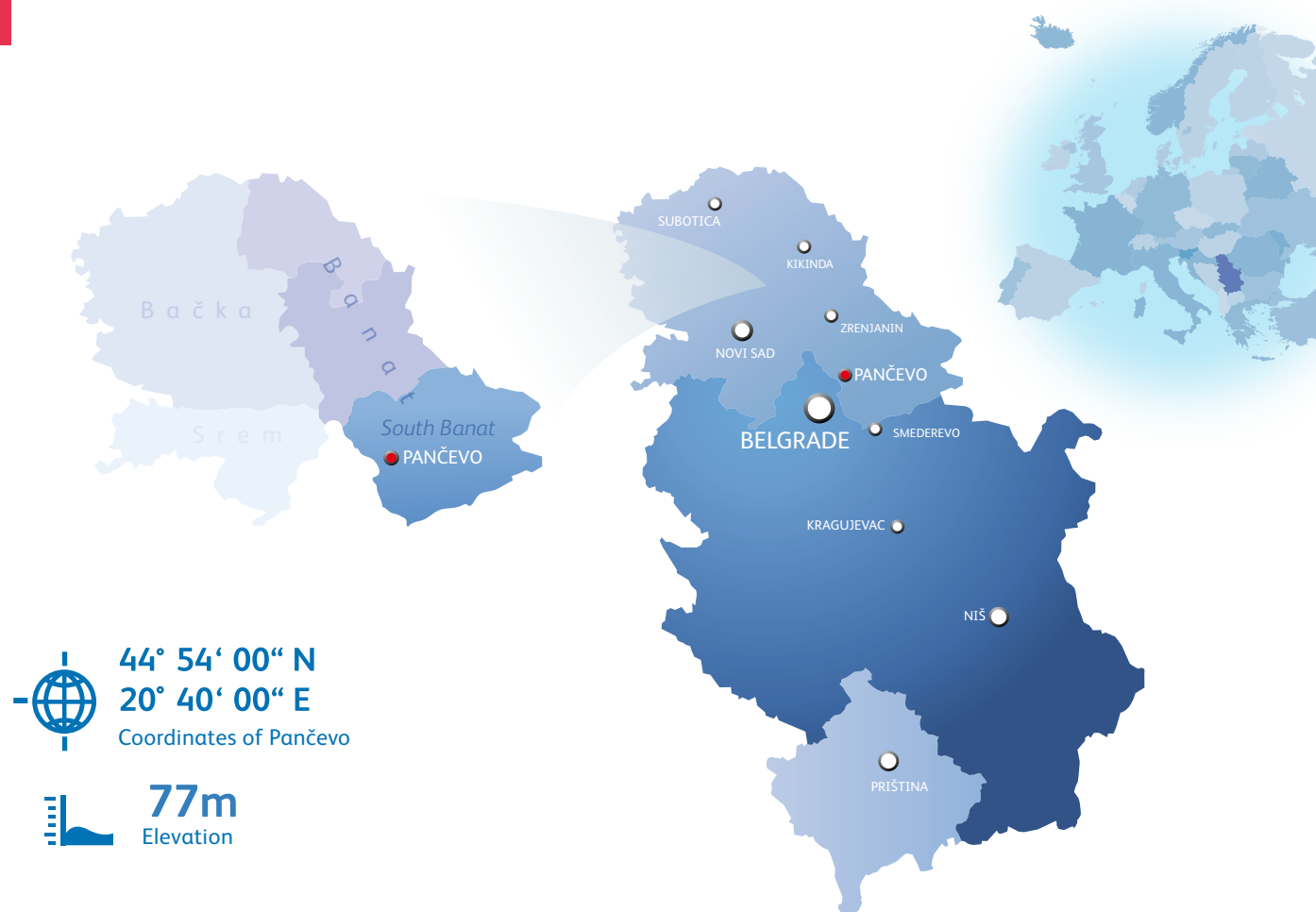
A WORD FROM THE MAYOR		LOCAL GOVERNMENT	
BASIC FEATURES		City government	20
Geographical position	6	Mayor	21
Climate	9	City council	21
		Councils	22
HISTORY, TRADITION AND CULTURAL HERITAGE		Public Invitations for Employment Stimulation	22
Cultural heritage	14	City Administration	25
Industrial heritage	18	City Service Centre	26
		Internet presentation of Pančevo ...	27

City Newsletter	28	ECONOMY	
Facebook profile of the city	28	The basic economic parameters	53
Geographic Information System ...	29	Economic capacity and trends	58
E-government	29	Food processing industry	62
Competitions announced by the city	30	Foreign trade and exchange	64
Twin cities	31	Support to the economy	66
Other activities taking place		Agency for the Economic Development	
at the city Hall	31	of Pančevo	66
		Regional Chamber of Commerce Pančevo	67
		INVESTMENTS	
INFRASTRUCTURE		Current investors	68
Transport infrastructure	32	Expenses	69
Road traffic	34	Incentives for investors at the local level	70
Train service	34	Financial incentives	72
Air transport	35	Tax incentives	74
Water traffic	35	Obtaining permits	75
Public transport	36	QUALITY OF LIFE	
Utility infrastructure	38	Cultural offer of the city	79
Construction and city planning	38	Library	80
Power Supply	39	Archives	81
Water and sewage systems	40	Museum	81
Waste management	41	Institute for Cultural Heritage Preservat.	82
Planning of public green spaces	42	Cultural Centre	82
Gas pipeline	43	Youth Centre	83
Heating	43	Cultural Hall	84
Telecommunications infrastructure develop.	44	City events	86
„Telekom Srbija”	45	Sports	88
		Leisure and entertainment	92
ENVIRONMENTAL RESOURCES		Parks	92
Quality of air	47	Restaurants and cafes	94
Quality of soil	48	Health and social care	96
Quality of water	49	Information	98
		RTV “Pančevo”	98
HUMAN RESOURCES		The weekly “Pančevac”	98
Workforce	51	Cultural diversity of the city of Pančevo	100



Basic features

GEOGRAFICAL POSITION



Pančevo is situated in the southern part of Vojvodina, which is in the northern part of Serbia. It is the economic and cultural center of southern Banat.

Infographic 01

Area - Population - Density population

Source: the Republic Institute for Statistics

Republic Of Serbia

■ 88.361 km²

👤 7.186.862
(2011.)

👤 81

Density of population
population number per square kilometer



South Banat

■ 4.245 km²

👤 293.730
(2011.)

👤 69

Density of population
population number per square kilometer



City of Pančevo

■ 755 km²

👤 123.414

👤 163

Density of population
population number per square meter



Share in total area and
population

Share in South Banat
population



Pančevo is located 18 km northeast of the capital of Serbia - Belgrade, at the confluence of the Tamiš and Danube rivers. It covers the area of 755 km², which is inhabited by 123.414 people (which is 1,7% of the total population of Serbia) or 163 inhabitants per km².

Its proximity to Belgrade is one of its prime advantages of Pančevo in comparison with other local governments in Serbia. Pančevo is even closer to Belgrade than the Belgrade municipality of Obrenovac.

Pančevo borders with the following municipalities: Kovačica, Alibunar, Kovin and the city of Belgrade, with the southern border on the Danube (direction to the Belgrade municipality of Grocka).

Distance in km:

	Pančevo	Indija	Vršac	Obrenovac	Zrenjanin	Subotica	Loznica	Šabac
BELGRADE	18	51	86	35	73	189	140	88
NOVI SAD	106	31	139	113	50	111	118	67

Pančevo has a particularly advantageous geo-strategic position, since it is near the Corridor 10 Highway (Salzburg-Ljubljana-Zagreb-Belgrade-Niš-Skopje-Thessaloniki), with sections from Belgrade to Horgoš and from Niš to Dimitrovgrad and Corridor 7 Highway (the Danube transversal), which directly connects Pančevo with central and southeastern Europe. Corridor 7 is the lifeline of the European water traffic and the navigable part of the Sava river (North Sea - Rhine - Main - Danube - Black Sea - further to the east). Pančevo has a port and two piers on the Danube.

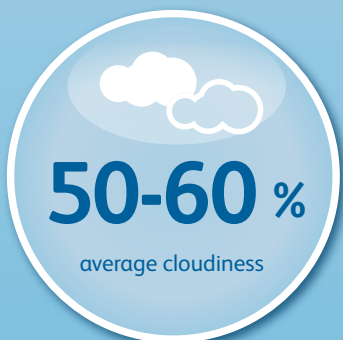
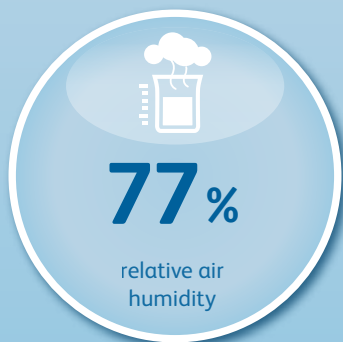
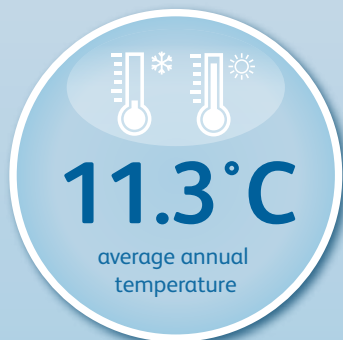
Athens (Gr)	›	1120
Berlin (De)	›	1227
Amsterdam (NI)	›	1750
Paris (Fr)	›	1816
Vienna (Aut)	›	633
Podgorica (Mne)	›	435
Brussels (Bel)	›	1699
Prague (Cze)	›	919
Budapest (Hun)	›	392
Rome (Ita)	›	1316
Bucharest (Rom)	›	600
Sarajevo (BIH)	›	324
Warsaw (Pol)	›	1143
Sofia (Bul)	›	411
Istanbul (Tur)	›	993
Zurich (Sui)	›	1276
London (GB)	›	2010
Stokholm (Swe)	›	2152
Madrid (Esp)	›	2610
Zagreb (Cro)	›	415



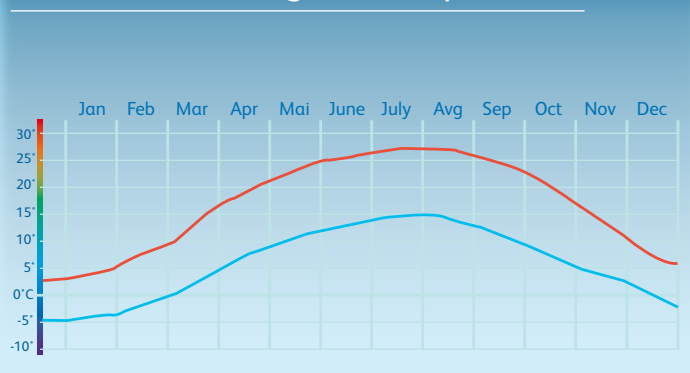
Infographic 02

General climate data -
the annual change of temperature

LEAP



The annual change of temperature



The territory of Pančevo is considered one of the hottest areas of Vojvodina, with an average annual temperature of 11.3 degrees Celsius and with more than a hundred days of sunshine a year.

The average annual value for the relative humidity is 77%.

The average cloudiness is between 50 and 60%. Precipitation is highest in late spring and early summer, late autumn and early winter. The average rainfall during the year is about 643 mm.

The drought index by Marton classification is 30.2, illustrating that Pančevo is situated in a relatively dry area.

CLIMATE

Favorable microclimate conditions influence the diversity of natural sites, plant and animal life and the high quality of agricultural land.

The city of Pančevo lies in the area of moderate, continental climate, with four seasons, specific to its long, warm summers and autumns, mild winters and short springs. A specific feature of the climate is košava, a strong and dry eastern wind that sometimes blows for up to three weeks. Besides košava, there are also southwest, south, west and northerly winds. The number of windy days (with winds stronger than 12.3 m / s) during a year is 45. The maximum level of humidity occurs in the months with the lowest temperatures (November, December, January and February).





HISTORY, TRADITION AND CULTURAL HERITAGE

The city of Pančevo, which lies on the northern bank of the river Tamiš, has a rich cultural and historical heritage. It has been mentioned since the 9th century under the various names: Bansif, Panuka, Panucsa, Panoca and Panzova. Former Panuka was built on the foundations of a fort, built by the Dacians and Romans, and destroyed by the Austrians in the 18th century. When the Turks, who had ruled between 1520 and 1717 were expelled from the territory of Banat, the town became a part of the Austrian Empire, as Tamiški Banat autonomus region. In 1794, it became independent, when strict military rule gave way to the development of town planning, trade, commerce and culture.

In the late 19th century, there were two Orthodox churches, one Catholic, one Evangelical, one Reformed, one Romanian Orthodox church, and one synagogue. There were also: the High School, the Crafts School, the Trade School, Male and Female High schools, Senior Serbian school for girls and Serbian people's school.

At the turn of the 18th and 19th century, town squares gradually formed, thus creating the historical core of Pančevo that has remained the town center up to the present day. Many public and representative buildings that were erected at that time still stand out with their size and facade decorations.

Uroš Predić (1857-1953)

Isidora Sekulić (1877-1955)

Branislav Nušić (1864-1938)

Miloš Crnjanski (1893-1977)

Jovan Jovanović Zmaj (1833-1904)

Mihajlo Pupin (1858-1935)

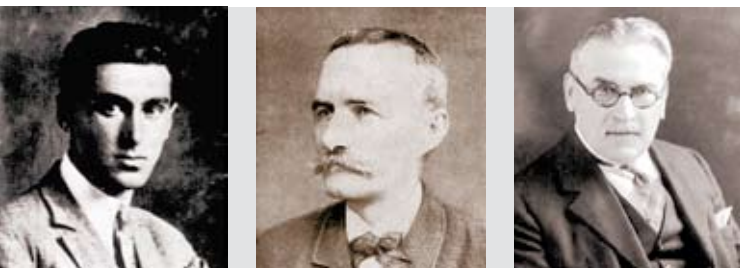




The most important step towards a market economy was symbolically made at the big Industrial and Agricultural Exhibition, held in 1905 in the Common Garden and attended by 713 entrepreneurs and craftsmen from southern Hungary.

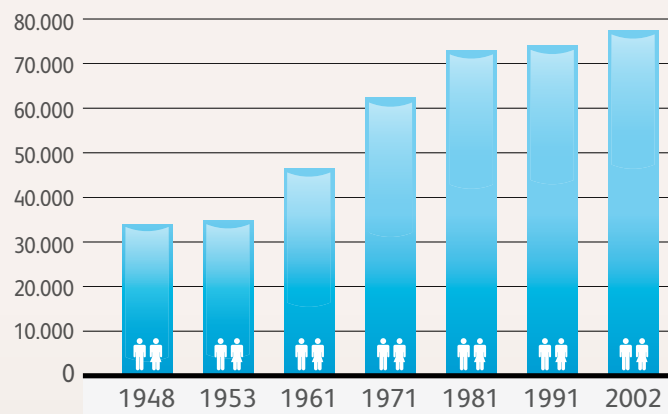
The city was home to some of the greatest Serbian writers, such as: Miloš Crnjanski, Jovan Jovanović Zmaj and Isidora Sekulić, and was the home of archpriests Vasa Živković and Milan Ćurčin. The biggest Serbian comedy writer, Branislav Nušić, at one time, studied trade in Pančevo, while Mihajlo Pupin, one of the world most famous physicists, attended the Pančevo High School.

In Pančevo, there are three monuments, declared by the Ministry of Culture to be the cultural heritage of great importance. These are the Transfiguration church, the Monastery of Vojlovica and the archaeological site of "Starčevo Grad" in Starčevo. More information about Pančevo can be found at: www.pancevo.rs



Infographic 03

Comparative table of population



1971.

1981.

1991.

2002.*

Ban. Brestovac 3.809 3.865 3.715 3.517

Ban. Novo Selo 7.872 7.963 7.987 7.345

Glogonj 3.257 3.605 3.475 3.178

Dolovo 6.582 6.836 6.790 6.835

Ivanovo 1.893 1.947 1.439 1.131

Jabuka 5.453 6.453 6.598 6.312

Kačarevo 8.088 8.309 8.103 7.624

Omoljica 5.693 6.500 6.782 6.518

Pančevo 61.588 71.009 72.793 77.087

Starčevo 6.545 7.304 7.579 7.615

City of Pančevo 110.780 123.791 125.261 127.162

*Census conducted by the altered methodology (excludes the persons who did not live in the registered legal residence for more than a year - usually those working abroad on a temporary basis).

Source: LAPZ Pančevo 2011



Cultural heritage

In and around the city, numerous objects of material culture from the Neolithic, Iron and Bronze Age and the period of the Slavs, have been excavated. The site 'Starčevo grad' (8km from Pančevo) is particularly important, with its valuable excavations dating back to the Neolithic culture, also known as the 'Starčevo culture'.

The Charter on cooperation between Neolithic local communities was signed in Starčevo in March 2011. It was the first step in connecting three, world important sites situated on the lower Danube: Lepenski Vir, Starčevo Grad and Vinča Belo Brdo.

The religious buildings of great cultural and historical interest are: the Serbian Orthodox monastery Vojlovica, Our Lady's Assumption Church, Holy Transfiguration Church, the Roman Catholic Church of Charles Borromeo, St. Anne Church, the Evangelical Church and the Large or Lower and Small or Upper Church at Dolovo.

The Monastery of Vojlovica

It is located southeast of Pančevo, within the area of the oil refinery and about 5.5 km from Starcevo. According to tradition, the monastery, along with the church dedicated to Holy Archangels Gabriel and Mikhail, was founded by Despot Stefan Lazarević in 1405, who issued a Charter of Foundation. The monastery was repeatedly burnt down and rebuilt. In the period from 1967 to 1987, the monastery was not active because of its proximity to the Oil Refinery. Rehabilitation and reconstruction, which started in 1987 and was completed in 1991, brought it back to life.



Our Lady`s Assumption Church

It was built between 1807 and 1810, thanks to the donations of the national benefactors, including Karadjordje Petrović. It was designed in the baroque style, with prominent elements of classicism. Between 1829 and 1833 painter Konstantin Danil, with his exceptionally original skills painted the iconostasis in such a way as to achieve a unique artistic unity that was the highlight of the Serbian Biedermeier painting. In 1933 the Belgrade painter Živorad Nastasijević painted the walls of the church. Because of its two baroque towers on the front facade, it is also known as the church “with twin towers.”

Holy Transfiguration Church

The church was built between 1873 and 1878, in the Neo-Byzantine style based on the design done by the architect Svetozar Ivačković. Following the example of the late Byzantine buildings, the church has a Cruciform base, with a dome which dominates in its monumental size, and the tall turret connected with the church walkway. The icons for the iconostasis, which are harmoniously integrated into the architecture of the interior, were painted by Uroš Predić from 1906 to 1911, in the academic realist style - a modern expression of the common iconographic scheme.





St. Charles Borromeo – Roman - Catholic Church

The Roman - Catholic Church and Convent, built in 1758/59 were shown on the map of Pančevo from 1761 and at the time they represented the nucleus around which the town center with its public buildings, military barracks and other buildings, was developing. In 1858, the basilica-based tower was added to the church. The main altarpiece with Charles Boromeo, was brought from Vienna in 1804. Now, it is the only place in Pančevo where the organ is played.



St. Anne church – the Weifert Chapel

The Church - chapel of St. Anne was built by the Pančevo industrialist Gerorg Weifert in 1923 as a family endowment. This single-nave building, with its irregular basis, emphasized altar area and rectangular turret, was built in the secession style. Its windows and rosettes were glazed using a stained glass technique.



Evangelical Church

The Evangelical religious municipality was established in Pančevo in 1840 and its founder was Francis Kverfeld, a constructor and entrepreneur. The Evangelical church and parish house, which form one unit, were erected in 1905 in accordance with the designs made by the architect Francis Szabolcs and Juliet Papa. The basis of the church is cruciform, with the altar and the rectangular turret on two floors. The facade of the church is covered with bricks.

In the settlement of Vojlovica there are the Evangelical church, built in 1901 and the Reformed church, which dates back to 1902.

Dolovo has two Serbian Orthodox churches: the Church of the Relics of St. Nicholas (Great, Lower Church) and the Church of the Relics of St. Nicholas (Little, Upper Church), which due to their artistic and architectural value, have been declared cultural monuments of great importance.





Industrial heritage

PANČEVO ... A TRADITION OF GOOD BUSINESS

Pančevo has always been the industrial centre of the region, and not surprisingly, it boasts a rich industrial heritage on its territory.

The oldest industrial building in Vojvodina – the Beer Brewery – dating back to 1722 is in the very center of Pančevo. Pančevo’s industrial heritage includes buildings, cultural monuments which had an economic purpose, and the most important among them being: the lighthouses at the confluence of the Tamiš and Danube rivers, the complex of Weifert Brewery, the Red Warehouse, the Supplies Warehouse, the railway station “Tamiš”, the water tower, the Silk Factory, the mill complex on the road to Jabuka, the rolling mill. The buildings which bear witnesses to this rich industrial heritage are grouped along the Tamiš, which, in the ancient times, was the main transport and trade road.

The city of Pančevo has a long tradition of handicraft industry, which was first mentioned more than 850 years ago. Many institutions have a long business tradition, such as the Crafts Association, founded 215 years ago, or the oldest brewery in this part of Europe, founded way back in 1722. In the late 19th century, the first factory for wet processing of corn in this region was built, and today it is known as Skrobara (The Starch Factory). At the very beginning of the 20th century, the first factory for producing cotton yarn began to operate. Since 1905 Pančevo has been a town of fairs. The most famous Governor of the National Bank of Serbia, Georg Weifert was from Pančevo.



The second wave of industrialization in Pančevo came in the period between the two World Wars, when factories for manufacturing glass, airplanes, cotton and furniture, were built. The Lamp factory 'Tesla' (1931), the Flat glass factory (1932) and the Airplane factory 'Utva' were particularly important for Pančevo. The third and the most significant wave of industrial development in Pančevo (followed by the neglect of agriculture), came during the sixties and seventies, when large industrial plants were constructed (particularly the three large factories: the Refinery, Fertilizer Plant and the Petrochemicals, all located in the so-called south industrial zone. There was also a significant modernization of existing plants as additional capacities were constructed and/or new technologies introduced (e.g. the glass factory and brewery). In the eighties, factories for metal processing and several food processing plants were built.

The first severe shock that Pančevo's industry experienced was at the beginning of the 1990's of the last century. When economic sanctions were introduced in Serbia, many export-oriented enterprises suffered. Most importantly, they lost the pace in development, because at that time, the neighboring countries, supported by significant amount of foreign capital, developed similar production facilities with more modern technology. After the lifting of sanctions, there was both a lack of working capital and market for goods. In the period of transition, which is still under way in

Pančevo, large economic enterprises disappeared, primarily in the areas of metal, metal-processing, non-metal processing, textile, footwear and leather and wood processing industries. During the transition period, significant numbers of small, medium-sized and small businesses were established as a continuation of the industrial tradition which Pančevo had cherished for many decades.

Despite these difficulties, the industry in Pančevo still has good prospects to develop, mainly due to its geo-strategic position – vicinity to Belgrade, utilizing the Danube as the main transversal of the European Union, production tradition and large number of skilled workers.



Georg Weifert (1850-1937)



LOCAL SELF-GOVERNMENT

Pančevo received city status on 29th December 2007, i.e. by coming into force of the Law on Territorial Organization of the Republic of Serbia. Its local self-government comprises the Pančevo City Assembly, Mayor, City Council and City Administration. City Assembly of Pančevo has 70 members.

The city government shows its accessibility in many ways and tries to govern the city in cooperation with its citizens, catering for their needs. The interviews of the city representatives in the local media and participation in discussions and meetings with groups of citizens or individuals, give the opportunity to exchange information and provide better insight into the needs of the male and female citizens of Pančevo. Citizens with problems can submit an application to the Service Centre and expect the response in the shortest possible time. The e-mail addresses of the Mayor, Deputy Mayor and all members of the City Council can be found on the city web site, which enables the citizens to communicate with them and get informed about the issues that are within the Council's jurisdiction. Using modern technological solutions, the city has improved its work in many ways. E-sessions of the Council have been recently introduced in turn facilitating a more efficient operation of the body.

Mayor

Pavle Radanov

Pavle Radanov was born in Pančevo on 6 May 1973. He comes from an old Pančevo family. He went to elementary school and Grammar School "Uroš Predić". He graduated from Faculty of Economics, acquiring Master degree; his Master Thesis was "Local self-government and functioning of public utility companies in Pančevo". He enrolled for Doctorate Studies in 2009, and is currently at his third year of studies.

He has 20 years of work experience. For five and half years he was in private business which comprised various activities. From June 1998 he worked for PUC "Vodovod i kanalizacija", and in June 2007 he started working for Secretariat for Enforcement of the City Administration.

He was also employed in publishing-educational centre "Markplanetak". He has been an associate of Belgrade magazine "Profit magazin" since 2010. He has been member of the Pančevo City Assembly since 2012. The same year in August he became deputy director of PUC "Zelenilo", where he worked until taking the position of Mayor of the City of Pančevo.

He has published over 30 scientific papers and texts, mainly from the area of economics. He has also developed his family history, where he named his first known ancestor from 1725; his family tree contains around 900 persons.

He has been member of Serbian Progressive Party since 2008.

He is married and father of two children.



City council

- **Jelena Batinić** Economy, Private Entrepreneurship and Investments
- **Predrag Živković** Finance
- **Suzana Jovanović** Labour, Employment and Social Policy
- **Predrag Patić** Utilities
- **Vladimir Delja** Environmental Protection and Sustainable Development
- **Maja Svirčević-Prekić** Agriculture, Village and Rural Development
- **Aleksandar Farkaš** Sports
- **Nikola Damnjanović** Youth
- **Jasmina Večanski** Culture and Information
- **Dr Milan Trifunović** Health Care
- **Miodrag Radojković** Education

Councils

Among the bodies that contribute to improving the socioeconomic situation in the city, there are three particularly important councils: the Economic Council, the Council for Employment and the Council for Social and Economic Issues.

The Economic Council of Pančevo is a permanent, professional and advisory working body with the following roles:

- to initiate developmental strategies and projects,
- to monitor, support and evaluate the implementation of developmental strategic plans,
- to develop mechanisms for communication and information flow, aimed at enabling domestic and foreign investments, and to
- continuously monitor situations caused by the economic crisis.

The Council for Employment of Pančevo was founded in May 2009, with the aim of providing competent authorities with opinions and recommendations related to the following:

- designing employment programmes
- organization of public works and hiring the unemployed in carrying out public works,
- additional education and training, and
- other issues related to employment.

The Council for Social and Economic Issues

was founded to facilitate social dialogue between the city of Pančevo, Pančevo Association of Independent Unions and municipalities as social partners, and their active involvement in the process of solving economic and social issues relevant to the city.

Some of the tasks of the Council are:

- to exchange opinions and information and achieve consensus on the important social and economic issues that fall within the scope of the local community,
- to actively participate in the peaceful settlement of industrial and social conflicts, and
- to monitor and identify problems within the scope of work of the Council and to make proposals, opinions and initiatives to the republic and other authorities in charge so that the solutions could be found.

Public Invitations for Employment Stimulation and Improvement

Public Invitation for Self-Employment Grants

The public invitation for self-employment grants is intended for unemployed persons who are registered with the National Employment Service, to enable them to set up an enterprise, company or any other form of organisation. The grant offers a one-time payment of an amount provided by the City of Pančevo in cooperation with the National Employment Service. The grant receivers are obliged to perform their newly registered activity in the territory of the City of Pančevo for at least 12 months from the starting date.

Public Invitation for Grants for New Job Openings (New Employment)

Public invitation for grants for new job openings is intended for employers who are willing to hire persons registered with the National Employment Service, resident in the territory of the City of Pančevo who will be provided with permanent full time jobs. The grants are provided by the City of Pančevo in cooperation with the National Employment Service.

Public Invitation for Organising the Execution of Public Works

The public invitation for organising the execution of public works is intended for employers who are willing to hire persons for the execution of activities that are of public interest for the local community. This measure of active employment policy refers to employment of the categories of unemployed persons who are more difficult to employ and who are registered with the National Employment Service.

The funds intended for the organisation of public works are provided by the City of Pančevo and are used for the wages of persons involved in such public works, for the reimbursement of commuting expenses, as well as for the costs of the public works. The maximum duration of any public works is 6 months.

Public Invitation for Parties Interested in the Implementation of the Active Employment Policy Measure “Professional Practice 2012”

The public invitation for parties interested in the implementation of the active employment policy measure “Professional Practice 2012” enables unemployed persons to undertake professional training for independent work in their professions, without employment. The public invitation is intended for employers that regularly settle their liabilities like the taxes and contributions for mandatory social security of the employees who have human resources and other capacities for execution of the professional practice and whose official seats are in the territory of the City of Pančevo. The City of Pančevo provides aid to such persons during professional practice. The duration of professional practice depends on the qualifications of each participant in this program.

Public Invitation for Students for Participating in the Programmes of Student Practice (Winter Student Practice and Summer Student Practice)

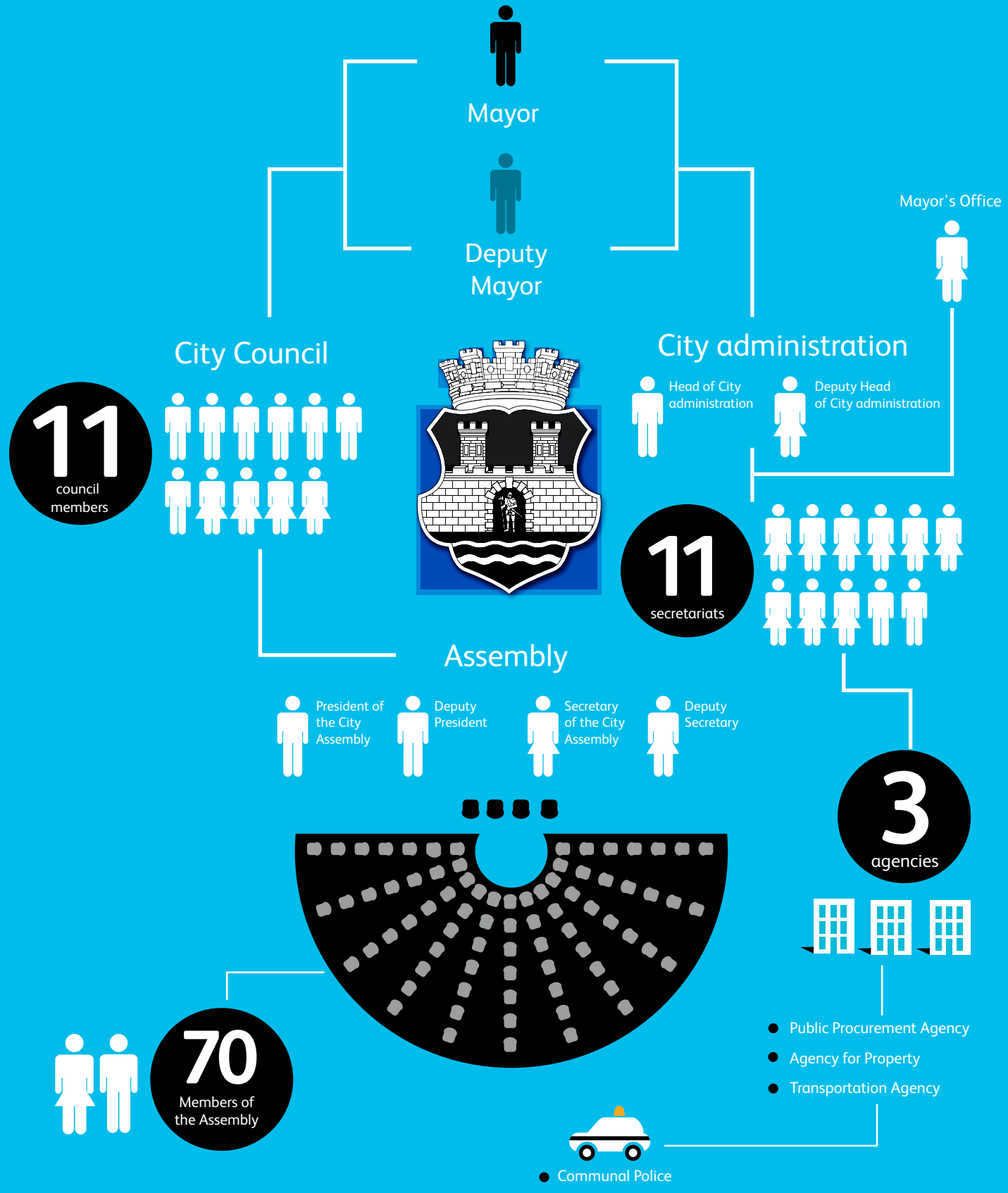
The public invitation is intended for students (of undergraduate-, master- and doctoral studies) and degree-exam candidates at faculties and higher professional schools who live in the territory of the City of Pančevo, and it refers to student practice with an employer for a period not longer than two months (in either summer or winter). The City of Pančevo provides grant-in-aid to such students during such practice. Students who participate in the programme are elected through a public invitation in cooperation with employers.

Job Fair

The City Job Fair aims at increasing the visibility of the programmes and measures planned by the local action plan for employment, in order to make their implementation more successful. The Fair gathers unemployed persons, employers, students, representatives of citizens’ associations and local self-government, thus enabling direct contacts between all stakeholders.

Public Invitation for Parties Interested in the Women Employment Stimulation Programme “Tutorial Training”

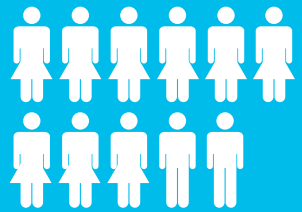
The public invitation for parties interested in the women employment stimulation programme “Tutorial Training” is intended for unemployed women up to 40 years old, resident in the territory of the City of Pančevo, who have no experience in their professions and who have not used the programmes of the National Employment Service (“Professional Practice” and “First Chance”). This programme provides work practice with an employer in duration of three months, and grant-in-aid during such practice.



11
council members



11
secretariats



President of the City Assembly
Deputy President
Secretary of the City Assembly
Deputy Secretary

3
agencies



- Public Procurement Agency
- Agency for Property
- Transportation Agency

70
Members of the Assembly



● Communal Police

City Administration

The City of Pančevo is a territorial unit in which citizens of Pančevo and nine of its villages exercise local self-government rights (City Administration of Pančevo).

The Statute of the City of Pančevo is a basic legal act passed by the Parliament of the City of Pančevo, which is the highest authority that makes important decisions on issues such as the budget and balance sheet, the local taxes, development plan, spatial and city plans, and other acts regulating the activities in Pančevo. The executive bodies of the City are: the Mayor (elected by the Assembly from its members), the City Council - chaired by the Mayor and the City Administration of Pančevo - chaired by the Head.

City administration of Pančevo includes the following:

11 SECRETARIATS

- Secretariat for **General Administration**
- Secretariat for **Assembly Affairs, Mayor and City Council**
- Secretariat for **Public Services and Social Affairs**
- Secretariat of **Finance**
- Secretariat for **Environmental Protection**
- Secretariat for **Urban Planning, Construction, and Housing and Communal Affairs**
- Secretariat for **the Economy and Economic Development**
- Secretariat for **Inspection**
- Secretariat for **Tax Administration**
- **Joint Affairs** Service
- Secretariat for **Agriculture, Village and Rural Development**

3 AGENCIES

- Public Procurement Agency
- Transportation Agency
- Agency for Property

- **Communal Police and the Mayor's Office**

The main task of these services is to carry out professional and administrative services for the City, and other bodies entrusted with tasks such as: issuing building permits, support to economic activities, exercising social rights of citizens, care for young people, encouraging activities in the field of health, education, culture, information and sports, among others.

The city of Pančevo endeavours to continuously improve the administration and to better meet the needs of its citizens. In order to keep pace with modern trends, several projects have been carried out and several are in progress, with the aim to upgrade work.



City Service Center

By establishing the City Service Center in 2008, the City Administration enabled citizens and legal persons to meet their needs in a better, more efficient and modern way.

In a renovated and technically modern space, 30 employees at 22 service desks on daily basis:

- issue basic documents
- receive submissions
- certify documents
- provide information on inspection
- effect payment of child benefits, pupil and student grants
- perform other administrative duties within the jurisdiction of the City.

The City Service Center is open on working-days from **8 am to 3 pm**, and on Wednesdays up to **7pm**. The centre is adapted to provide services to people with mobility problems, the blind and low vision, thus promoting equal opportunity for all fellow citizens to exercise their rights.



Internet presentation of Pančevo

The internet presentation of Pančevo is the official presentation of the city of Pančevo, but is also used by the City Administration as the electronic service. The presentation provides basic information about history, geographic and demographic characteristics, economy, culture, youth etc.

The presentation also includes sections with information on the secretariats and other departments, and gives citizens access to information on their authorities and ways of exercising their rights and obligations. Different forms can also be downloaded from the site. The site is regularly updated with information related to the work of the City Administration, as well as announcements of events organized by the City of Pančevo. In the “Press Center” section, there is a list of the Pančevo media, press releases and a photo archive of the city’s most significant events. In the presentation, citizens can also find all the necessary information on projects and competitions that are announced by the city of Pančevo, and links to the current national and international competitions.



SYSTEM 48 – the fastest way to the solution of communal problems

System 48 of the City of Pančevo provides citizens with possibility to point out to the existence of any problem related to communal competences by phoning, sending a text message, filling a web form available at the City of Pančevo webpage or personally – by visiting window no. 10 in the City Service Centre.

The Centre/operator forwards citizens' files to competent service representative, i.e. to a public company or public utility company. Within 48 hours the citizen is provided with a reply through the same communication channel he/she had used (except for personal visit), informing him/her about the status of the problem they complained about, i.e. whether it has been solved or is under the solving procedure.

Consolidating the work of all public companies in the City of Pančevo, System 48 enables solution of problems and requests from citizens, utilizing funds in a new, modern and functional way based exclusively on technical data and facts.

СИСТЕМ 48



www.pancevo.rs/sistem48

SMS : +381 65 866 25 00

Phone: +381 13 308 948

Window no. 10 in the City Service Centre



Facebook profile

<http://www.facebook.com/pancevograd>

Invitations to events that are organized by the City Administration can be found on the official profile of Pančevo on the Facebook social network. Also, photos taken at the most interesting events and media reports on the activities of the City Administration can be found on the profile. Special attention is paid to presenting cultural and sports events in our city.

Geographic Information System

<http://gis.pancevo.rs/gpPancevo/>

Geographic Information System (GIS) is a modern way of storing and presenting spacial data. Using the Internet, GIS Pančevo is supposed to provide easy access to information on planning documents, plots, construction conditions, infrastructure and other items, to all interested citizens, potential investors and employees in public and public-utility companies. The GIS is regularly updated by the employees of relevant companies. Apart from the plans, it will also enable better management through the development of reliable statistical data and other necessary analysis relevant to the city. Besides having more quality records of existing conditions and construction conditions within the GIS, the city will in the near future develop tools related to tax records, billing and population records.

From April 2011 to April 2012, the City of Pančevo implemented project “Improvement of GIS in Pančevo”. The project worth somewhat more than 150 thousand euros involved partnership with the City of Šabac, and the funds were provided by the European Union within the programme Exchange 3. The most important outcomes of the project included increased knowledge of employees responsible for maintenance of the system and updating of data; improvement of technical and spatial capacities for training and work; establishment of procedures for development and regular updating of GIS; establishment of environmental database in GIS; awareness raising and improved knowledge amongst users of GIS applications.

E-administration

E-administration is a service provided by the City Administration which allows citizens to easily obtain important information and documents. By using this service, clients can check voter registration lists by entering their personal identification numbers, order birth certificates, marriage certificates, death certificates, and proof of citizenship. The documents can be either sent to their home addresses or taken at the office of the Service Center. It also allows citizens to check the status of their application in the City Administration, by entering the number of the application and their social security number.



Competitions announced by the city of Pančevo

By announcing public competitions in various fields, Pančevo applies the principle of democracy and the right to equal opportunities to get budget funding sources. The above-mentioned mechanism strengthens the role of civil society, institutions, individuals, and encourages partnership among them, including the private sector.

Competitions are announced every year. There are over ten of them and they set a good example of how well the City Administration operates, since the taxpayers funds are used transparently and the results of the project activities improve the quality of life in the local community.

Major competitions include the following areas:

- Competition for co-financing projects in the field of social protection in promoting non-institutional measures in this area;
- Competition in the field of culture that primarily enables associations, informal groups, artists and the similar to realize project ideas in various segments of cultural and artistic activities in accordance with the adopted strategy;
- Competition for co-financing projects and programmes in the field of sports that allow continuous systemic approach to the development of sport, as well as the promotion of sport clubs and priority sport disciplines in accordance with the adopted strategy;
- Competition for the realization of the Action Plan on youth care that provides support to youth organizations, informal groups and young individuals in solving problems and meeting the needs of young people in different areas at the local level, in line with the strategy;
- A public call for one-off assistance, in the form of cash awards, to be allocated to the best students in final years (with average mark over 9.0) who study at colleges and universities founded by the Republic of Serbia;
- A public call for students to participate in the Program of cooperation of the City of Pančevo and the British Council;
- Competition for financing programmes and projects in the area of providing support and the empowerment of citizens' associations that is a mechanism for strengthening civil society activism;
- Competition for the realization of the Local Action Plan for Employment of the Council of Pančevo. This is a mechanism to increase the employment of male and female citizens through various programs (voluntary practice and the programme of professional development of young people with disabilities);
- Ad for refugees and displaced persons, living in Pančevo, to participate in the allocation of construction material so as to solve housing problems;
- Ad for the selection of beneficiaries for the allocation of financial assistance for economic empowerment and family self-reliance of refugees and internally displaced persons in cooperation with line ministries, thus improving quality of life of refugees and displaced persons.

Twin towns

The City of Pančevo has fostered international cooperation for decades, particularly in the areas of culture, sports, economy and the environment. In order to improve such cooperation, 14 Charters of twinings have been signed, including the following: Bonjhad, Province of Ravenna, Voskresensk, Kumanovo, Zaanstad, Boulogne Billancourt, Resita, Prijedor, Neapoli, Stavropoli, Bela Slatina, Michalovce and Stupino.

In recent years, Pančevo has been intensively and continuously cooperating with the Province of Ravenna. The most significant support has been in building and maintaining the city's system for monitoring the air quality and participation in the project of reconstruction of the Common Gardens (construction of the running track and children's playground). There are two projects going on at the moment: recultivation of the livestock cemetery and the Festival of Environmental Films.

In addition, the Province of Ravenna has provided several training programmes for professionals in the field of environmental protection, both in Pančevo and Italy. Similar programmes were organized for secondary school pupils and their teachers.



Other activities at the City Hall

The City Administration often hosts and organizes various events, aimed at promoting the development potentials of Pančevo in different areas. This is a place where different sides can have a dialogue through organized round tables and where exhibitions and presentations are organised. This all contributes to the modernization of the City Administration and a greater involvement of citizens in local community life.

In order to improve conditions for organizing such events, the city of Pančevo, in cooperation with the Provincial Secretariat for Local Self Government and Inter-municipal cooperation, reconstructed the lobby of the City Administration in 2010 and changed both its infrastructure and the programme scheme. Now, it is a modern, multimedia space suitable for organizing different events.







Infrastructure

TRANSPORT INFRASTRUCTURE

Pančevo has excellent geographical location in southeast Europe. In the immediate vicinity are:

- the capital of Serbia - Belgrade (18 km);
- Corridor 10 Highway;
- The Danube Transversal (Corridor 7 Highway);
- National highway 1.9 (E-70): Belgrade-Pančevo-Vršac-Romania;
- International airport “Nikola Tesla” (40 km).



	Pančevo	Indija	Vršac	Obrenovac	Zrenjanin	Subotica	Loznica	Šabac
 corridor 10	18	4	86	30	74	11	154	26
 corridor 7	0	10	66	37	50	73	154	87
 airport	40	47	104	32	90	189	122	68
 port	0	31	66	37	50	73	57	0

Distance in km

The Danube transversal - the **Corridor 7** Highway, covers about 600 kilometers of the Danube. It is an integral part of the flow: **The North Sea - Rhine - Main - Danube - Black Sea** and further to the east.

The **Corridor 10** Highway extends along the international highways **E-75** and **E-70** and connects the west and east. It stretches and goes from Salzburg to Ljubljana, Zagreb, Belgrade, Niš, Skopje and Thessaloniki, with sections from Horgoš to Belgrade and Niš-Dimitrovgrad. The length of Corridor 10 in Serbia is 800 kilometers.

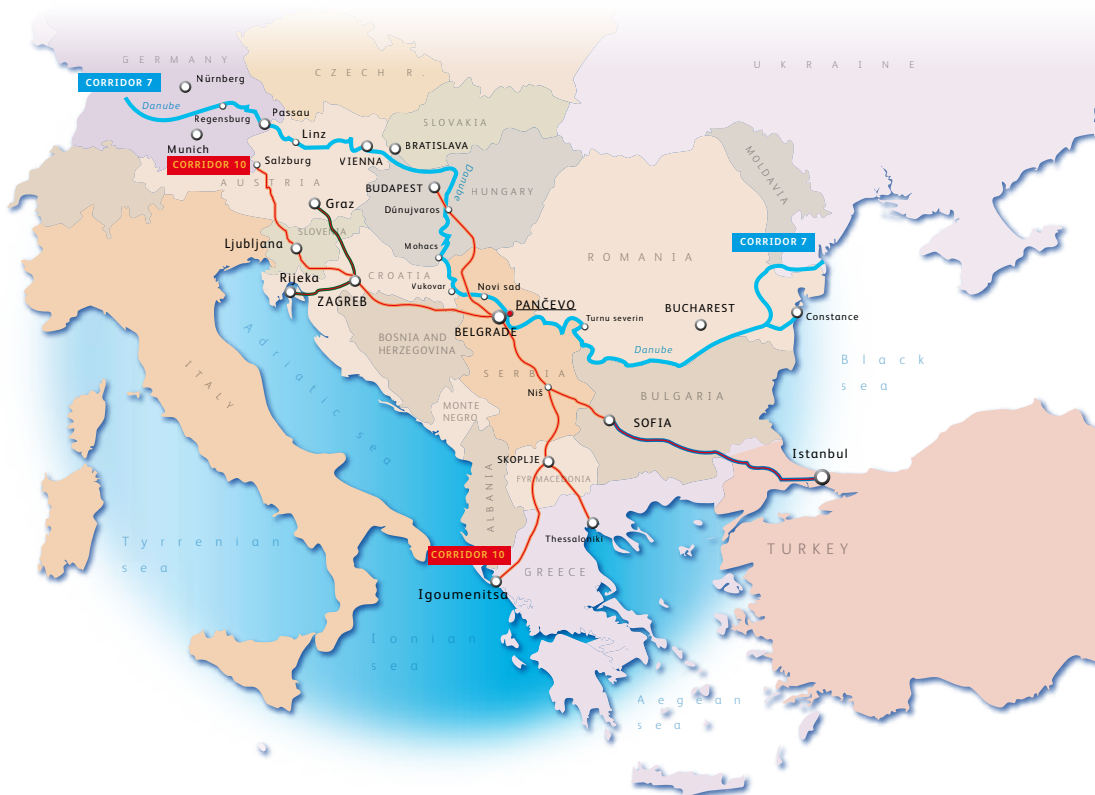
Pančevo is conveniently located in relation to major transportation and communication centers:

Airport - the closest airport in Serbia is the international airport “Nikola Tesla” in Surčin;

Port - Pančevo has active ports on its territory. The port of the Pančevo is the most upstream port which can accommodate river-sea vessels up to 5000 gross tons carrying capacity, at any water level;

Industrial track - railway transport is carried out in the following directions:

Belgrade - Pančevo - Vršac - Bucharest (Romania) - Constance (with a line that branches off to Ukraine) and Pančevo-Zrenjanin-Kikinda.



Road traffic

The territory of Pančevo is covered by a network of roads with a total length of 147 km. All national highways and local roads have a modern surface.

The city of Pančevo accounts for 16.53% in the total road network of the South Banat district. Most notably, Pančevo is the “gate” on the line running north and south of Banat, and the link with the rest of Serbia.

There is a wide network of roads that connects Pančevo with many cities and cities:

1. National highway 1.9 (**E-70**): **Belgrade-Pančevo-Vršac-Romania**;
2. State motorway 24: **Kovin-Pančevo-Kovačica**;
3. A network of local roads, 147 km long, linking the villages and the city of Pančevo.



Train service

Pančevo is an important junction for both road and rail services, linking the capital with the eastern part of Banat, that is, the North and South of Banat. Pančevo is near the Belgrade-Bar railway.

- Belgrade-Pančevo-Vršac-Romania (east)
- Pančevo-Zrenjanin-Kikinda (north)
- link with Bar via Belgrade

Air transport

Pančevo is only 40 km away from the international airport “Nikola Tesla” in Belgrade.

In the northern part of Pančevo, within the factory complex of the aviation industry “Utva Pančevo”, there is a sports airport “Pančevo”. The grass runway is about 900m long and 60m wide. The airport has a concrete apron that is 100 m long, and an air traffic control tower.



Water traffic

Since Pančevo is situated at the confluence of the Tamiš and Danube rivers, it is surrounded by significant water resources:

- transportation port (The Port of Danube - “Luka Dunav”);
- the navigability of the river Tamiš, 2 km upstream;
- Transverse Danube (Corridor 7 Highway);
- North Sea - Rhine - Main - Danube - Black Sea and further to the east.



Given that the Danube is defined as the European corridor 7, a significant increase of the importance of water transport can be expected in the future, but primarily in transit. The total length of the Danube in Serbia is 588 km, in the Banat region 148 km, and in the city of Pančevo about 30 km. The distance between the port “Luka Dunav” in Pančevo and Belgrade port is 10 km. A large part of Banat and the municipalities bordering the Danube are potentially suitable for inclusion in the network of waterways of Europe (Rhine-Main-Danube Canal).

On the left bank of the Danube, after 1153 kilometers, there is the ‘Luka Dunav’ (The Danube Port) Complex. The development area of the port has also been built, covering an area of 240 hectares. This complex is surrounded by the Danube, the water transport channel of the chemical industry, a railway track with marshalling yard, the international E-70 road, and the river Tamiš. The Port - ‘Luka Dunav’ is of a basin type. It is 1000 m long and 210 m wide, covers 21 hectares, and its depth enables sea and river boats of up to 5000t to sail into the port at the lowest water level. The length of the water line around the port complex, where it is possible to build a vertical quay, is 6500 m.



Public transport

The city public transport has been entrusted to “Autotransport Pančevo” company, with 79 buses at its disposal. All parts of the city are connected by eight bus lines, with buses running from 5am to midnight. Three lines have been extended to connect the surrounding villages and settlements: Starčevo, Jabuka, Kačarevo, Stari Tamiš and Banatsko Novo Selo. Buses leave every 30 minutes. There is a bus line to the surrounding villages and it is in operation from 3am to 00.00pm. During “rush hour”, buses leave every 30 minutes, and at other times, at every 60min. Numerous bus lines have been set up between Pančevo and Belgrade, so that buses leave at nearly every 15 minutes.



*Additional information can be obtained by phone (013) 2518-570, (013) 2510-445.
More information about the timetable can be found on the website www.jkpatppa.co.rs.*

Taxi Associations

Public transport includes not only buses, but also five registered taxi associations with about 98 employees.

Railway

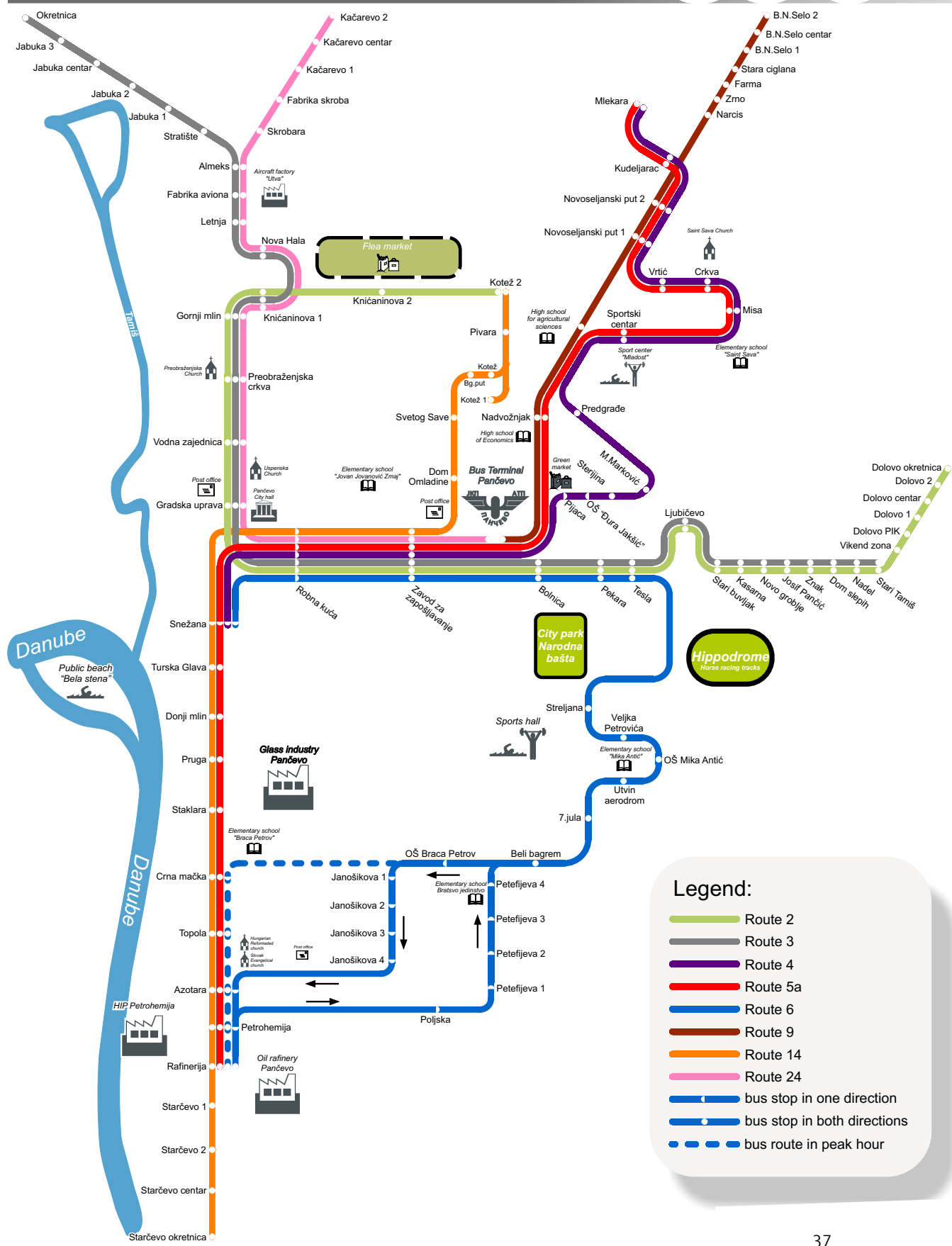
Pančevo and Belgrade are also connected by the Belgrade city rail – the Beovoz. There are four stops of the Beovoz located in a semi-circle form in the wider centre of Pančevo - Pančevo Vojlovica, Pančevo Strelište, Pančevo Varoš and Pančevo Main Station.



*More information on www.zeleznicesrbije.com,
www.srbrail.rs/redvoznje1/Beovoz.aspx.*



PANČEVO BUS ROUTE MAP



UTILITY INFRASTRUCTURE



Construction and City Planning

The Public utility company “**Directorate for Construction and City Planning of Pančevo**” deals with the development of construction land, construction and reconstruction of buildings and installations, construction and maintenance of roads and other road networks in the city and urban areas, including winter maintenance of roads, maintenance of city utility facilities, maintenance of public lighting in the city, maintenance of premises and construction and maintenance of utility facilities of Pančevo settlements, city and landscape planning, design of planning documentation of the utmost complexity: the physical plans of the city – municipality, general plans, general regulatory plans, construction projects and the like, which are the basis for developing the city and the investment incentives, and contribute to the articulation and satisfaction of the interests and needs of citizens, businesses and institutions in the city.

Conditions, approvals

“The Directorate for Construction and City Planning of Pančevo” carries out procedures for the following:

- alienation or leasing of construction land;
- leasing of premises and newsagents’ (through public bidding);
- leasing of public land designated for use as summer outdoor restaurants, billboards, advertising signs, promotional platforms, mobile advertising showcases, display cabinets, mobile carts selling popcorn and the like, setting up amusement parks, circuses, water slides, children’s cars, holiday and advertising stands.



Information on the procedures within the jurisdiction of Public utility company “Directorate for Construction and Town Planning of Pančevo” is available on the website of the city Public utility company: www.direkcija.pancevo.rs or by phone (013) 348-722 (operator) i (013) 317-212 (Department for City planning).



ПРИВРЕДНО ДРУШТВО ЗА ДИСТРИБУЦИЈУ ЕЛЕКТРИЧНЕ ЕНЕРГИЈЕ



Elektrovojvodina d.o.o.
НОВИ САД

Power Supply Company

“Power Supply Company Vojvodina Novi Sad – Power Supply Company Pančevo” deals with the distribution of electricity in the territory of South Banat. Consumers of electricity are supplied from nine existing substations of 110 kV, which are owned by the “Power Supply Company”. There are four categories of consumers: 1. households 2. general electricity consumption 3. consumers of low voltage electricity and 4. consumers of high and medium voltage electricity. Power Supply Company Pančevo has a total of 135,419 active consumers: 121,061 consumers in the category of households, 12,596 consumers in the general electricity consumption category, 1568 consumers of low voltage electricity and 194 consumers of high and medium voltage electricity.

In the area of Pančevo, consumers are supplied with electricity from five substations. Three stations are of 110 kV owned by the Power Supply Company. The other two substations of 110 kV and 220 kV are located in the southern industrial zone and are owned by the consumers themselves. In Pančevo, there are 50,010 active consumers in households, 6671 in the category of general electricity consumption, 830 consuming low voltage electricity and 97 consuming medium voltage electricity.

Connecting to the network

Connecting to the distribution system is carried out following the permission given upon the request of a legal person, i.e. an entrepreneur, or natural person. The completed application, along with appropriate documentation (proof of the legality of the building, proof of ownership or right to use the facility, site plan at 1:500 scale, drawn on a copy of the plan, paid administrative fee), are submitted to the Power Supply Company Pančevo.



All necessary information is available at the website: www.elektrovojvodina.rs



Water supply and sewage

Public Utility Company “**Water Supply and Sewage**”, deals with raw water collection, processing, distribution of drinking water, maintenance of water networks, wastewater collection and maintenance of the sewage system.

Citizens of Pančevo have access to the highest quality drinking water in Vojvodina. Water is extracted from the wells that are 40 meters deep and pumped into a water treatment plant. Groundwater of the Danube alluvium is used for this process. The total capacity of Pančevo springs is 800l/s, with an average annual production of 10.5 million m³. The city of Pančevo, along with Starčevo, Omoljica, Banatski Brestovac and Ivanovo, is covered with about 310km of water networks, with diameter of 80 to 800mm. Over 31,000 households, i.e. 98.000 people in Pančevo, use the water supplied by the city water's supply system. Other settlements have separate systems, and by connecting to the city water supply they will be able to use quality tap water.

Pančevo has built a separate system for channeling both waste and atmospheric water. The waste water sewer system, with the total length of 205km, has over 10.000 buildings connected to it, that is 85% of the population. There is not a plant for waste water treatment. The Feasibility Study and the General project have been done, laying foundations for carrying out this capital project.

The sewer atmospheric water system is 45km in length, covering 45% of city streets. Part of the water is drained by open channels.

Connection to the city water supply and sewage system

To connect to the water supply and sewage system, one should submit a request, accompanied with necessary documentation, to the Public Utility Company “Water Supply and Sewage” Pančevo. Upon making the main project of making access to the infrastructure of water supply / sewage system, the investor gets all necessary approvals from the competent institutions, on the basis of which the City Administration issues a decision to connect to the system.



For further information visit: www.vodovodpa.rs.

Waste management



Services related to the collection, transportation, removal and disposal of municipal waste, for natural and legal persons on the territory of Pančevo, are provided by the Public Utility Company “Higijena”.

The company is introducing the system for sorting waste, so that users can classify municipal solid waste according to their components. Recycleble raw materials (PET, plastic, paper, cardboard, glass, metal, etc.) are disposed of in special-purpose labeled bags or containers, separated from other mixed municipal waste that is disposed of in special bags or vessels. Special- purpose bags and waste containers (cans and containers), can be ordered at the head office of “Higijena” at 57 Cara Lazara St.

The company also provides emergency services for cleaning, collecting and transporting all types of waste. Construction waste is disposed of by “Higijena” on a dump site of inert waste, whereas waste of animal origin is disposed of in special coolers of the Sanitation service, before being transported to the pound in the city of Sombor. The company is ready to provide emergency services upon the call of legal and natural persons and utility inspection.

Instructions for new users of services

In order to start using services provided by the “Higijena”, legal persons are supposed to come to the head office at 57 Cara Lazara St, the Claims Service, every working day from **7am to 3pm**, and bring the following documents:

- a copy of the decision on registration of the company, as well as the original decision (for inspection) issued by the Agency for Business Registers (registration, checking out or changing of the activity) and
- a copy of the contract and original (for inspection) on the use of premises (as an owner or lessee of the premises).

Services for legal persons are classified according to zones, types of activity and the size of premises and are calculated according to the current decision on prices. The valid price list of all services is available on the internet presentation of the company.

Terms and approvals for constructors

Investors who build new or reconstruct existing facilities, must comply with technical requirements for cleaning, set by Public Utility Company “Higijena”, so as to be able to get a decision on the location permit. Technical requirements are issued by the Service for utility and technical work, following the submission of two copies of the application filled in by the investor, and the accompanying documents: an extract from the city plan and a copy of the first page of the extract. In order to meet the technical conditions required for cleaning, the main construction project must be approved by the Service for utility and technical activities, and investors are obliged to obtain such approval. It is necessary to have an authorized person from the company “Higijena” on the site when the building is getting technically certified, so as to check whether all technical requirements for cleaning have been met.



All information can be obtained by phone: **013/327-010** (utility and technical activities) and **013/ 327-013** (Claim Service) or visit www.jkphigijena.rs



Planning and maintenance of public green areas

The Public Utility Company “**Zelenilo**” was established primarily to provide services for more the efficient maintenance of public green areas as the infrastructural elements of the urban environment. The Company’s main activities are: construction and maintenance of public green areas, the production of planting materials, provision of funeral services, and provision of services related to green markets. Today, “Zelenilo” is one of the largest companies in South Banat, with high developing potential and 380 employees of various profiles and professions. The company has four operating divisions: “Joined Services”, “City Green Areas”, “Green Markets” and “Cemeteries”.

“**City Green Areas**” is a working unit which maintains 200 hectares of cultivated green areas and the production of nursery trees, shrubs, horticulture, seasonal flowers and turf grass.

It also deals with exterior and interior decorations, building paths, patios, fountains, devices for children’s playgrounds and the provision of machinery (trucks, auto-basket, pay-trailers, bulldozers, loaders). The sale of planting material is carried out in the nursery on the Bavaniste road and in the company’s shop located at the Green market.

“**Green markets**” is a working unit, that includes the main green market, four satellite markets (Strelište, Tesla, Kotež and Sodara) and the commodity market, “Airport”. On the Green market plateau there are 950 stalls selling agricultural, industrial and handicraft products, there are halls for selling frozen and fresh fish, cakes, milk, and 132 shops. The open commodity market “Airport” is an open shopping centre with 2735 stalls and 68 shops.

“**Cemeteries**” is a working unit, taking care of seven cemeteries - Orthodox, Catholic, New, Jewish, Evangelical, Reformen and Vojlovica cemetery.

Terms and approvals

Prior to making the main project, potential investors are obliged to obtain technical requirements set by the company “Zelenilo”. Also, prior to obtaining a construction permit and digging the public green area, they must obtain an opinion from the company.

Prior to obtaining a permit to carry out works on the public green area, they are obliged to get an approval that the “Zelenilo” gives after they have checked the project and technical documentation.



For more information, phone (013) 347-147 or visit www.jkpzelenilo.co.rs

Gas pipeline



The gas network covers most parts of the territory of Pančevo. There are high pressure pipelines, coming in from six sides. **Public Company “Srbijagas”** (Novi Sad) supplies the city of Pančevo with gas, through two working units “Transport Pančevo” and “Pančevo Distribution”. “Transport Pančevo” deals with transportation of high pressure gas pipelines and distribution to consumers directly connected to these pipelines. “Pančevo Distribution” provides consumers with gas through medium and low pressure pipelines.

The gas supply to the settlements on the territory of, Pančevo is carried out by four high-pressure gas pipelines: Batajnica-Pančevo, Kikinda-Pančevo, Pančevo-Tilva Pančevo-Smederevo.

“Pančevo Distribution” distributes gas on the territory of Pančevo to the following local communities: Gornji grad, Centar, Mladost, Kačarevo, Jabuka, Glogonj, Stari Tamiš, Dolovo, Banatsko Novo Selo and Banatski Brestovac.

Heating



The Public Utility Company ‘Grejanje’ provides customers with the heating on the territory of Pančevo. The overall heating consumption of the Company is 96 MW. Heating plant Kotež has installed capacity of 53.3 MW, while heating plant Sodara is of 26.5 MW, and they are both supplied with natural gas. In addition to these two heating sources, there are three more facilities: in Jastrebačka street no. 8, with installed capacity of 1 MW, in Sveti Sava street no. 89, with capacity of 0.28 MW and in Sindjelićeva street no. 23, with capacity of 0.814 MW.

The PUC “ Grejanje ” supplies approximately 11,500 customers in residential areas and about 400 customers with business premises. About 47 % of households in the city are supplied by a distance heating system, and about 10 % of households use hot water from our system.

Taking into account the availability of energy in existing heat sources, “Grejanje” has sufficient capacity to connect new users to the system.

Instructions on how to connect to the system

A buyer, that is a new user, is obliged to obtain approval from the company “Grejanje” to connect to the system, after paying the costs for getting the decision on approval, approval of the project and the fee for connecting to the heat source and distribution network.

The Decision on approval defines conditions for the design and construction of the heating equipment. The procedure for obtaining the decision on approval for connecting to the network begins with the customers or new users submitting the request to the company “Grejanje”, along with accompanying documentation.

*Additional information about the process of connecting a building to the distance heating system, can be obtained from the PUC “Grejanje” , Cara Dušana 7, or by phone: **013/315-400**. General information about the company can be found on: www.grejanje-pancevo.co.rs*



TELECOMMUNICATIONS INFRASTRUCTURE

In the modern world, developed telecommunication infrastructure has become the standard not only in urban, but also in rural areas. The biggest telecommunication service provider in Serbia, as well as in Pančevo, is “Telekom”.

The land-line telephone operator also includes the “Orion Telecom”, while in mobile telephone companies, apart from “Telekom”, there are two more operators: “Telenor” and “VIP”. Internet services are provided by the “Telekom”, SBB, “Orion” and a number of smaller operators. SBB, “TV Total” and “Digi SAT” provide services of cable television.

The “Telekom Srbija”



At the moment there are 46,149 installed POTS (regular land-line) connections installed in Pančevo. In other inhabited places on the territory of the municipality there are 13,721. In total there are 59,870 numbers. The percentage of digitalization is over 96%. The installation of devices that will accommodate over 2,500 land-line connections (CDMA technology) is planned for next year.

The number of installed ADSL connections is given in the table: in Pančevo there are 15,639, while in the rural area there are 2832 connections. More than 3,000 ADSL connections are planned to be installed in the future.

	land-line connections	ADSL connections	% (LL/ADSL)
the City of Pančevo	46.149	15.639	33,89%
other places with in the Pančevo territory	13.721	2.832	20,64%
TOTAL	59.870	18.471	30,85%

The mobile telephone company “Telekom Serbia” provides full coverage to the territory of Pančevo with GSM and 3G network. Besides providing basic land-line telecommunication and mobile phone services, “Telekom Serbia” (branch “Pančevo”) also provides customers with the following: data services, telematic services, value added services, ISDN services, intelligent network services, fixed satellite services, fixed services to use the DECT standard and multimedia services.

For business users there are additional offers: packages of services (Business InoCall, InoCall plus, Telepresence, Telehousing), linking multiple locations of one user (Office plus and BizFon packages); internal installations (Managed service - Biz WLAN) and fiber-optic installations (GPON).

“Telekom Serbia” maintains and repairs telecommunication systems and networks.

The procedure for network connection

During construction of new residential or commercial buildings, investors are introduced to technical conditions for connecting to the existing network. These are obligatory when making the main project. According to the Law on Planning and Construction from 2009, the city of Pančevo does not require the projects to be approved, unless it is conditioned by special reasons. In case it is necessary to set up a new TT tubing, the main project must be done prior to construction, approved by “Telekom”, and after construction is completed it must be technically approved

Additional information and provision of services, can be obtained at the branch office (1 Štrosmajerova St., Pančevo), on the Internet - www.telekom.rs or by calling the contact call **9813**.



ENVIRONMENTAL RESOURCES

During 2003 and 2004, the city of Pančevo, at that time the Municipality of Pančevo, was engaged in making the Local ecological Action Plan (LEAP), which was adopted in May 2004. LEAP envisages a multitude of activities including legislative and political, administrative, inspection, technical and technological measures. Every year, the city of Pančevo makes the programme for the protection and improvement of the environment, which defines the main priorities. The programme is made in compliance with the Law on Environmental Protection and LEAP.

As in majority of European countries, industrialization and ever more intensive traffic, individual burners and other human impacts lead to higher pollution degree, especially in urban areas. Major environmental impacts in Pančevo as urban area are reflected in its industrial zone comprising large number of plants with basic chemical production, primarily due to the location it occupies, since it is located in vicinity of settlements and in dominating wind directions.

The City of Pančevo has recognized the issue of pollution as an urgent problem and is actively working of mitigation of consequences the pollution has for residents' health.

Air quality

The system for the continuous monitoring of air quality, sirens, protests, emergency meetings in the local parliament, the environmental media campaigns, support of the Italian people, strikes and suspension of classes in schools, “Green spot”, the SEC, new local books of rule, criminal charges ... This is just a part of the activities initiated by environmentally aware citizens of Pančevo, who for many years have fought both institutionally and non-institutionally for the right to have a normal life.

The biggest problem was unregistered emission of organic pollutants (hydrocarbons) from diffuse sources and the handling area of the factories in the southern industrial zone. To solve this problem, Pančevo used donations (gift from the citizens of Ravenna, Italy) and its own funds to develop a modern system for monitoring the air quality. The results obtained by this measurement system, are presented on the monitor at the Town Administration and on the internet presentation of Pančevo, making it accessible to the public, polluters and the authorized inspection. After decades of complete ignorance, the public finally had an opportunity to clearly see the kind and level of dangerous substances are present in the air.

Pančevo is probably a unique city in Serbia because it applies mechanism for harmonization of manipulation and other working processes in unfavorable meteorological conditions, which was created in agreement made between the City, chemical industry and relevant institutions.

Factories located in southern industrial zone have adopted action plans pursuant to the Law on Environmental Protection, and they have been publically presented to the City of Pančevo. Implementation of the mentioned plans has started, implying innovation works applied to the facilities in accordance with financial power of the company. The goal of the mentioned plans implementation is harmonization of production processes with European standards, which would result in better quality of all environmental media.

The city has also taken the responsibility to continue to expand gas infrastructure network in the forthcoming period in Pančevo settlements in order to reduce impact of soot and particulate matters to human health, because comparison of results obtained in air quality monitoring carried out in measurement points of the City of Pančevo showed that particulates have the greatest impact to air quality (soot, total particulate matters, PM10 and PM2.5).

Quality of soil

Pančevo covers an area of 755 km² of which 84.5% is agricultural land. As for the quality of the agricultural land, there have been signs of degradation of all types of soil, slightly above the average level for natural soil, but still within acceptable values.

Out of the total area of Pančevo land (75,500 ha), agricultural areas cover 63,820 ha or approximately 84.5% of the municipality. Out of total agricultural land, 93.6% is arable land. Pedological value of arable land is high and mainly belongs to the class I and II. The prevailing types of soil are chernozem and low soil.



Waste disposal

Municipal waste is landfilled in old city landfill, and is also disposed at dumpsites in settlements. Rehabilitation and recultivation projects have been developed for dumpsites in Starčevo and Dolovo, while projects related to the remaining dumpsites located in settlements of the City of Pančevo are being developed at the moment.

Quality of water

Pančevo is the city situated on three rivers: Danube, Tamiš and Nadel. Monitoring of surface bathing and recreational waters is implemented every year in the City of Pančevo, in particular in the following locations: the Tamiš River – beach in Pančevo, Glogonje and Jabuka, the Danube River – beach "Bela stena", Ponjavica – beach in Omoljica, Banatski Brestovac and Ivanovo, lake in Kačarevo, so as to determine quality of public beaches.

General design for urban waste water treatment has been drafted, comprising preliminary Feasibility Study – for the City of Pančevo and all settlements. Oil Refinery Pančevo and HIP Petrohemija are the only ones with joint waste water treatment plant.

Water for the city water supply network is provided from wells fed from the Danube. The City is using approximately 90 active wells. Caught water is treated in treatment plant in order to achieve microbiological and chemical standard. Settlements of Dolovo, Jabuka, Glogonj, Kačarevo and Banatsko Novo Selo, which are not connected to the city water supply network, have their own water supply systems, but without the plant for preparation of drinking water. Quality control of water supply system is carried out by the Institute for Public Health of Pančevo.

HUMAN RESOURCES

The educational structure of the population (aged 15 and over) is as follows: the largest number of population is with secondary school education (55 %), those who have completed primary school education (20 %), 6 % is with higher education and 9 % with high education.

There are nineteen elementary, seven secondary schools, and Music and Ballet schools in Pančevo, as well as school for elementary and secondary education of children with development problems. Since the beginning of 2013/14 school year, elementary school Sveti Sava has introduced bilingual classes in one of the first grades, where tuition is carried out in Serbian and English languages. In order to follow trends in labor market, we specifically want to stress new vocational options introduced in secondary schools: computing network administrator, IT electro-technician, commercialist, financial administrator, legal advisor, mechatronics technician, environmental technician, technician for industrial pharmaceutical technology, geodetic technician – surveyor, and architectural technician.

Pančevo's vicinity to Belgrade offers the possibility to study at about 69 different faculties, thus giving it a huge advantage in human resources development. Since Belgrade is near Pančevo, young people stay in their home town during studies thus contributing to its further development.

Pančevo is also a university city, with the following faculties: The Faculty of Management - F @ M (Novi Sad), The International University (Novi Pazar) and The Faculty of Dental Medicine. Basic academic studies at these faculties provide the following professional profiles: graduate dentists, general lawyers, the interior lawyers(criminology), instructors, psychologist, English language teachers, management and economic consultants, information technology consultants, operational management consultants, media management consultants and business management consultants in informatics.

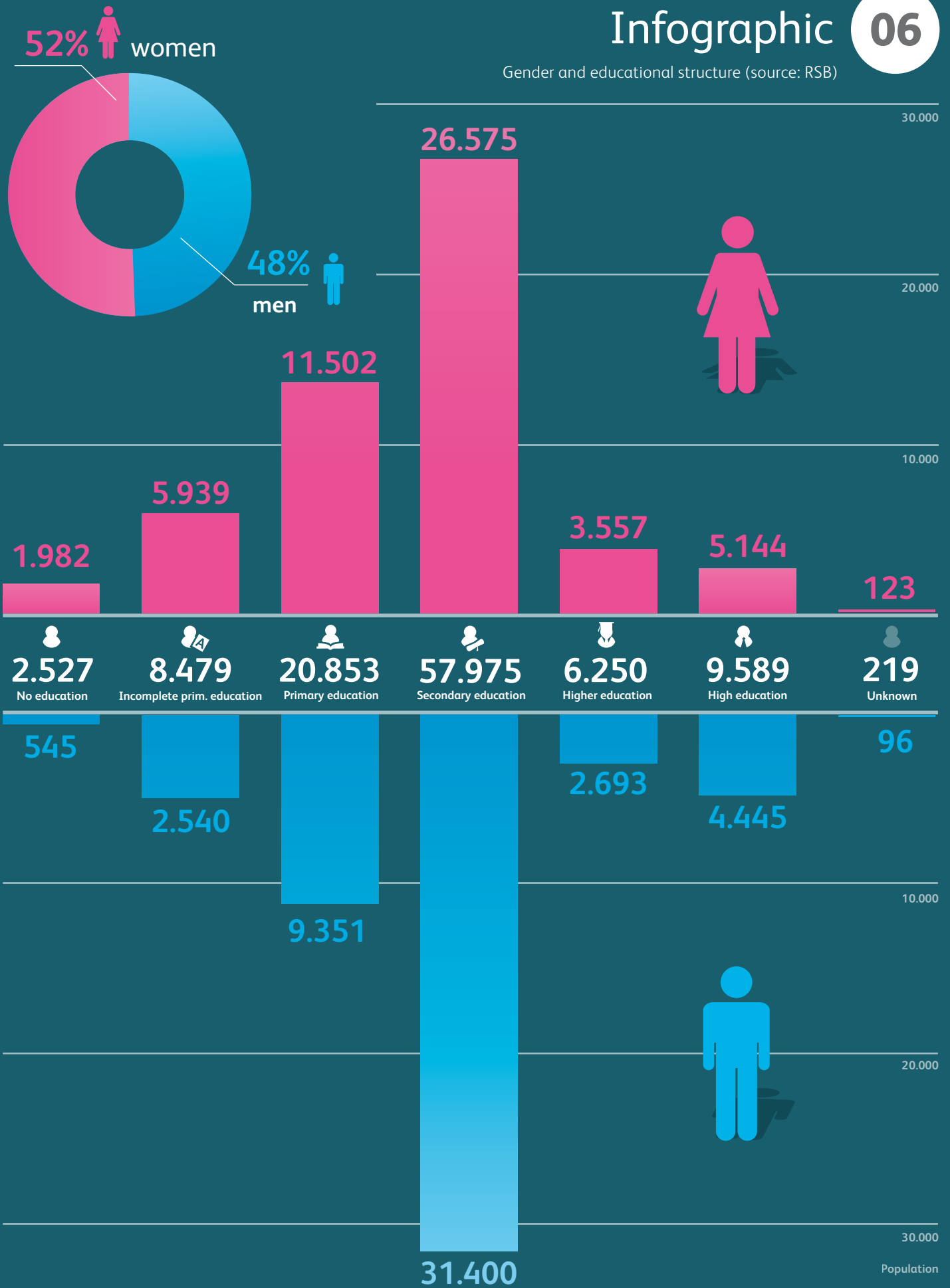
Many companies use English in their daily operations and it is an integral part of education in all schools and institutions of informal education. There are about 15 language schools and the most popular languages are English, German, Italian, French, Spanish and Russian.



Infographic

06

Gender and educational structure (source: RSB)



Labor force

Participation of employees in micro-enterprises in the Republic of Serbia, in number and territorial terms, is quite even and ranges around 15 %.

- Number of unemployed by level of education - **July 2013**. (Source: National Employment Service)

Level of education	I	II	III	IV	V	VI-1	VI-2	VII-1	VII-2	VIII
Number of employed	3.471	645	2.401	3.824	148	458	217	821	8	0

Participation of employees in medium and large companies is not even in territorial terms and ranges around 22.6% for medium enterprises at the level of the Republic of Serbia, in Serbia – north 20.6%, in Serbia – south 26.5%, and 42.2% for large companies in the Republic of Serbia, in Serbia – north 44.3%, and in Serbia – south 38.1%.

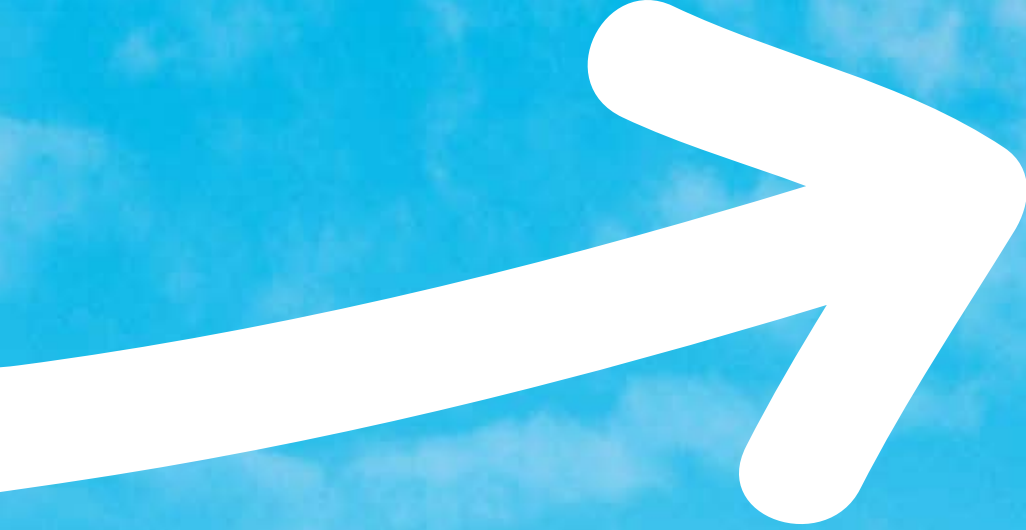
- Number of unemployed people (RSB)

	Number of unemployed
Alibunar	2.940
Bela Crkva	3.601
Vršac	6.463
Kovačica	3.584
Kovin	3.526
Opovo	966
Pančevo	11.738
Plandište	1.640

- Number of unemployed people - August 2013.

	Unemployed
Republic of Serbia	776.354
Vojvodina	203.592
South Banat	34.727
Pančevo	11.738

According to records maintained by the National Employment Service (August 2013), there are 11,738 unemployed persons in Pančevo. The city is making systematic efforts to reduce the unemployment rate, and has established the Employment Council for that purpose. In addition, local action plan for employment has been adopted for 2013. The implementation of this Action Plan is to provide assistance to the most difficult employable categories. Pančevo boasts a level of development that is above the average both in Serbia and the Province. For investors, this currently available workforce is a big potential, considering their knowledge and previous experience in industry and other sectors of economy. One should not forget the incentives when it comes to employment (*more on this in the section Financial Incentives*).



Economy

The chapter on economy has been done with the support of **the Regional Chamber of Commerce Pančevo**



BASIC ECONOMIC PARAMETERS

There are several important factors that affect economic development: geo-strategic position, developed infrastructure, proximity to markets and available labor. The City of Pančevo has significant comparative advantages: developed land, river and rail transport, it is only 18 km from the capital as the biggest market in Serbia, it lies on three rivers (the Danube, Tamiš and Nadel), it has a port on the Danube, a part of the Adriatic oil pipeline passes through our city, it is on the international highway Belgrade-Timisoara, near the Romanian border and, most importantly, has a highly qualified workforce.

Total area
755 km²

Land area (social and individual farms)
63.820 ha

Population (2011 Census)
123.414

Number of unemployed (August 2013)
11.738

Average net income per employee (July 2013)
50.196 RDS



The main consumer market is the Belgrade market, with about 2 000 000 inhabitants, 18km away from Pančevo.

Since the early 18th century, Pančevo has had a long tradition of craftsmanship and industrial production. Crafts are slowly disappearing, and they are being replaced by small and medium enterprises. So in 2012, according to the Agency for Business Registers, 1244 companies from Pančevo submitted an annual financial statement.

If we divide enterprises and companies according to their activities, the greatest share belongs to trade-related companies (43.17%), which is followed by processing industry (19.61%), professional, scientific, innovation and technical business activities (9.72%) and construction (7.96%).

In Pančevo there are several well-known industrial operations with a long history: processing of petroleum products, fertilizer production, petrochemical complex, aircraft factories, lamps, glassware, furniture, textiles and others.

Developed industrial facilities that small and medium-sized enterprises rely on, proximity to the market, developed infrastructure and a highly-skilled workforce make Pančevo attractive to any potential investor 87,4% of all enterprises are micro enterprises that, in accordance with EU standards, employ up to ten employees. They employed 18.1% of total number of workers.

The main consumer market is the Belgrade market, with about 2 000 000 inhabitants, 18km away from Pančevo.

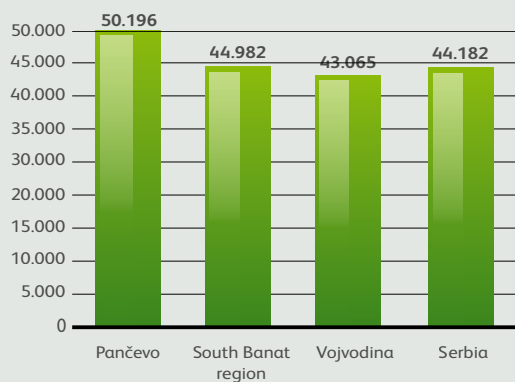


- An overview of the number of companies by number of employees in the South Banat (2012)

	Number	Share
without employees	264	21,22
1 employee	341	27,41 %
from 2 to 5	377	30,3 %
from 6 to 10	105	8,44 %
from 11 to 50	125	10,05 %
from 51 to 250	28	2,25 %
over 250	4	0,33 %
total number of companies	1244	100 %

Employees in Pančevo have higher than average salaries in comparison to those employed on the whole territory of Serbia, and the salaries are above average for Vojvodina, which is the most developed part of Serbia.

- Average net income per employee in July 2013



Source: Republic Institute of Statistics

The highest average net salaries in South Banat, paid in July 2013, were in Pančevo (50.196), Vršac (49.111) and Kovin (41.421).

	Total
Republic of Serbia	44.182
Vojvodina	43.065
Belgrade	54.778
South Banat region	44.982
Alibunar	31.122
Bela Crkva	32.623
Vršac	49.111
Kovačica	24.956
Kovin	41.421
Opovo	33.067
Pančevo	50.196
Plandište	26.757

As for sectoral structure, majority of companies were active in the following sectors: wholesale and retail (43.4 %), processing industry (19.85 %) and professional, scientific, innovation and technical activities (9.8 %)

- Number of companies per sectors in Pančevo (2012)

Agriculture, hunting, forestry and fishing	33
Mining and quarrying	1
Manufacturing	244
Production and distribution of electricity, gas and water	4
Water supply, waste water management, waste disposal	14
Construction	99
Wholesale and retail trade	537
Transport, storage and communications	62
Hotels and restaurants	25
Information and communication	41
Financial intermediation	5
Real estate, renting	2
Professional, scientific and technical activities	121
Administrative and supporting service activities	28
Education	11
Health and social work	1
Arts, entertainment and recreation	1
Other utility, social and individual services	15
TOTAL	1.244

More than two-thirds of workers (75 %) were employed in all three sectors: manufacturing 13,153 or 47 %, agriculture, hunting and forestry 4756, or 17 % and wholesale and retail 3239 or 11.6 %.

The most dominant company structure, in terms of size, is small companies (94, 4 %). On the other hand, large companies (only 0,9 % of total number), employ a higher percentage of workers.

Number of enterprises by size:



Although small and medium-sized companies make up 99.04% of the total number of companies, it is the large companies that have the biggest impact on the economy of the region. In 2012, these companies employed 45.2% of workers, generated about half the business revenue (54,5%) and had the biggest influence on the negative net financial result.

	Number of companies	Number of employees	Revenue
Pančevo	1244	12.105	101.069.160

- The structure of companies, employees and revenue in municipalities (2010)

south Banat	Number of companies	Number of employees	Revenue
Alibunar	143	621	5.036.034
Bela Crkva	124	777	3.472.392
Vršac	510	6.350	7.240.122
Kovačica	183	1.189	7.240.122
Kovin	219	2.176	12.766.793
Opovo	53	265	4.426.552
Pančevo	1.414	13.691	91.499.653
Plandište	74	843	4.514.019
TOTAL	2.720	25.912	181.054.649



Economic capacities and trends

All economic sectors are developed in Pančevo: industry, agriculture, construction, industry of construction material, trade, catering, transport and communications, housing and utility service, as well as financial and other services.

Industry and agriculture are the most prominent factors in economic the development of Pančevo, while the development and promotion of tourism are future priorities.

The **“HIP-Petrohemija” stock company Pančevo; The NIS Oil Refinery Pančevo; The “HIP-Fertilizer Plant” Ltd.; The Pančevo Fertilizer Plant; The “Pannonia” Pančevo**, the factory for producing chemical products for household ; The “Ratar”, a factory for production of mill products, and other companies with world wide reputation which have for decades been the leaders in economic growth of the region.

The chemical industry is the second most dominant industry. Its share in the overall manufacturing industry is 20%. Petrochemical complex has a significant share in the field of chemical industry, with 30-year- long tradition and an annual production of petrochemicals of about eight hundred thousand tons. Besides these, there are also the production of mineral fertilizers, plastics processing and production of household chemicals. It is important to note that it is the ‘home’ of the largest oil refinery in Serbia.

The following industries are the most important components in the economic development:

Basic chemical industry

production of petrochemical products, raw materials and chemicals and fertilizer production

Processing chemical industry

production of cosmetics and plastics manufacturing

Processing of oil and petroleum products

Metal and electrical industry

metal processing

production of light bulbs

production of aluminum profiles and structures

metal products and manufacturing of process and other equipment

Food processing industry

peeling and grinding grain

production of bread and rolls

fruit and vegetables processing

processing of meat and milk

production of starch and

production of animal feed

Processing of non-metal minerals

processing and shaping of glass

Industry of leather, footwear and textiles

production of footwear

leather processing and leather goods production and

production of finished textile products

Construction materials industry

production of final products of wood and lumber

production of classic and laminate flooring

carpentry

production of furniture and

production of pallets and wood packaging.

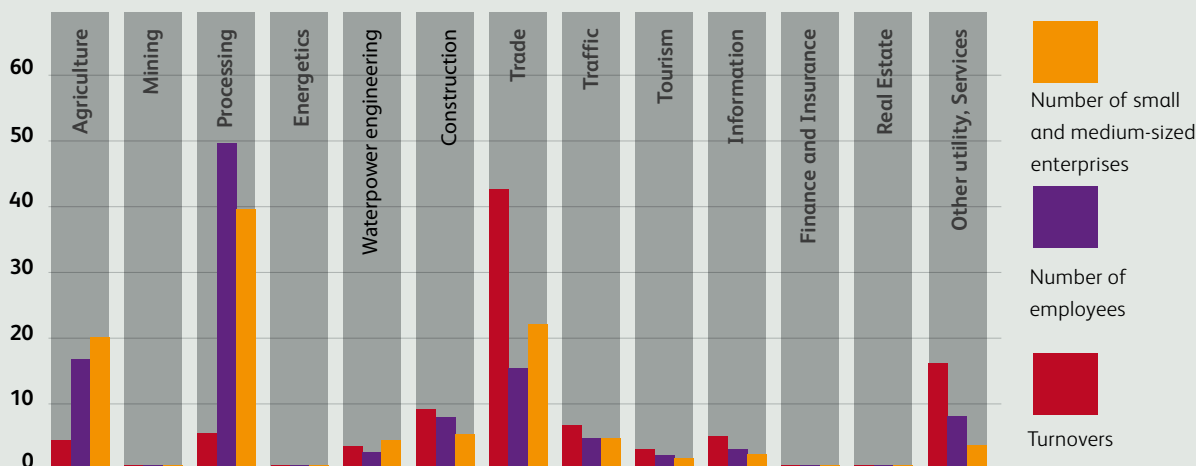
Employees in Pančevo, per business sectors in 2011

Agriculture, hunting, forestry and fishing	738	3,38%
Mining and quarrying	94	0,43%
Manufacturing	7385	33,82%
Production and distribution of electricity, gas and water	344	1,58%
Water supply, waste water management, waste disposal	775	3,55%
Construction	1087	4,98%
Wholesale and retail trade; repair	1960	8,98%
Hotels and restaurants	66	0,3%
Information and communication	440	2,01%
Transport, storage and communications	1409	6,45%
Financial intermediation	475	2,18%
Real estate, renting	1	0%
Professional, scientific and technical activities	473	2,17%
Administrative and supporting service activities	607	2,78%
Education	1941	8,89%
Health and social work	2615	11,98%
Arts, entertainment and recreation	234	1,07%
Other utility, social and individual services	97	0,44%
TOTAL	21.833	100%

Source Republic Institute of Statistics

Pančevo is one of the most important industrial centers both in Vojvodina and Serbia. The industrial structure is highly diversified, and the following companies covering different areas are the most important for industrial development: crude oil processing - **“NIS-Oil Refinery”** Pančevo, production of petrochemicals - **“HIP-Petrohemija”** joint stock company, production of fertilizers, nitrogen compounds and carbamides - **“HIP-Azotara” Ltd.**, manufacture of metal structures - **“Tehnomarket” Ltd.**, construction and maintenance of roads and other facilities of importance to public transport - **“Vojvodinaput”**, production of air planes and related equipment - **“Utva - airline industry” Ltd.**, machines and tools - **“Utva Milan Premasunac”** Kačarevo, forestry and other forestry activities - **“Vojvodinašume”** - **“Banat”**, growing wheat, legumes and oilseeds - **“Stari Tamiš”** joint stock company, production of starch and starch products - **“Jabuka Starch Industry”** joint stock company, production of ready-made feed for farm animals - **“Factory for Animal feed Jabuka”** joint stock company, grain storage and manufacture of grain mill products - **“Granexport”** joint stock company, production of paper and cardboard containers - **“Fimpak” Ltd.**, printing of chromocardboard packaging - **“6 October”**, production of agricultural products, sales of agricultural machinery and equipment - **“Almeks” Ltd.**, services of loading, unloading, reloading, storage, weighing of goods, reloading of containers - **“Luka Dunav”** joint stock company, design and production of clothing - **“Passage Group”**, the production of household chemicals - **“Panonija”** joint stock company.

● Number of enterprises, employees and turnover by sectors, 2012



Local, successful companies tend to invest more in new technology and strive to meet important quality standards necessary to enter foreign markets.

Industrial production in the Republic of Serbia between I and III month of 2013 increased by 5.2% compared to the same period in 2012.

In the period between I and III month of 2013, industrial production in Vojvodina increased by 6.1% compared to the same period of 2012. The growth has been recorded in mining (14.6%) and processing industry (7.2%), while electricity, gas, steam supply and air conditioning sectors recorded fall (40.6%).

Industrial production increased in the area of south Banat by 39.4% compared to the period January–March 2012. Expressed per industrial sectors, the picture is the following:

- Mining **+105.6%** (exploitation of oil and natural gas **+27.9%**)
- Processing industry **+39.2%**.

Within the processing industry sector, growth of production in the period between I and III month of 2013 compared to the same period in 2012 was the following:

- food processing industry **+ 7.3%**
- beverages production **+ 69.7%**
- production of leather and leather-related products **+ 31.1%**
- production of wood and wooden products, except for furniture **+ 31.2%**
- production of paper and paper products **+ 3.5%**
- printing and multiplication of audio and video media **+ 142.9%**
- production of coke and oil derivatives **+ 57.3%**
- production of chemicals and chemical products **+ 59.2%**
- production of basic pharmaceutical products and preparations **+ 38.9%**
- repairwork and installation of machines and equipment **+ 19.6%**



Food processing industry

The food processing industry is based on the quality of agricultural products from the region. In the South Banat existing food processing facilities are evenly located in the area, keeping the transport costs to the minimum. All manufactured goods, except oilseeds, are processed here, and the proximity of the Belgrade consumer centre significantly lowers the cost of making final products.

However, in recent years there has been a disbalance between processing capacities and products of primary agricultural production. Despite having good potential, productivity is low and existing facilities are underused. The main problems in the food-processing industry are: a lack of accumulation of capital, a lack of investments, limited market on one hand and unfinished privatization on the other (more than 50 % of food-processing enterprises have been privatized).

Food processing industry includes:

The grain-milling industry

which deals with the storage, peeling and grinding of the grains, as well as the production of bread and pastry. The region has a strong processing capacity. Existing corn-mill organizations can accommodate and process over 300,000 tons of wheat, and in the municipality of Pančevo itself, the largest processor can grind 100,000 tons of wheat per year, which is more than 7% of the total purchase market surplus in the territory of Serbia. The Seed center can further process more than 2,000 wagons of various seeds per year, and export the surplus. Companies dealing with this industry are: the “Ratar”, the “Pekara”, the “Granexpor” etc.

Fruit and vegetable processing

is carried out on the territory of the municipalities of Bela Crkva, Plandište, Pančevo and Vršac. Total capacity of the coolers is about 30,000 t of frozen fruits and vegetables. Company ‘Tamiška’ deals with these activities on the territory of Pančevo.

The processing of milk

Is very important in the region, and all dairies are privately owned. The largest dairies are in Pančevo and Vršac, with the capacity to process more than 50 million litres of milk. The dairy “Pančevo” has been resold, after unsuccessful privatization and there is a small dairy called “Panmlek”.

The meat processing

industry processes poultry, pork and beef in slaughterhouses, in all municipalities in south Banat. The biggest slaughterhouses, with capacity of about 70,000 t of primary processing and meat products, are located in Pančevo, Alibunar and Plandište. “Mesopromet” and “Burjan” are two major companies dealing with meat processing on the territory of Pančevo.

The production of starch

and starch derivatives is carried out in the oldest factory in this part of Europe by using wet processing of corn. Located in the South Banat near Pančevo, in the midst of rich fields of corn, starch industry “Jabuka” processes high quality corn into high quality products - native starch, modifiers based on dry starch, hydrolysates, dextrin, glue and by-products - gluten, bran and germ. Processing capacity is 200 tons of corn a day.

The production of animal feed

is very important, and at times factories produce over 100,000 tons of various concentrates. Famous concentrates produced by factories for animal feed production can be found on the market, especially concentrates produced by the Factory for animal feed production “Jabuka”.

Foreign trade

Between January and March of 2013 trade in goods between Southern Banat and foreign countries amounted to total value of 262.02 million dollars, out of which export made 165.76 million dollars (63.3 % of total trade value), and import made 96.26 million dollars (making 36.7 % of total trade value).

The surplus of 69.5 million dollars was recorded in the same period, with coverage of import by export of 172.2%. compared to the same period last year, export increased by approximately 13.1%, import by 1.7%. In 2013, export from south Banat made 16.85% of total export from Vojvodina, i.e. around 5.52% of total export from Serbia. The share of Southern Banat region import in overall import of Vojvodina is 6.8%, i.e. 2.06% in overall import of Serbia.

Observing the balance of foreign trade per municipalities of south Banat region for the period between January and March 2013, it can be concluded that out of eight municipalities in the region, surplus in trade of goods was made in municipalities of Bela Crkva (915,000 USD), Kovin (1,272,000 USD), Opovo (673,000 USD), Pančevo (60,302,000 USD), Plandište (564,000 USD) and Vršac (7,419,000 USD), while municipalities of Alibunar and Kovačica recorded deficit (1,054,000 USD and 595,000 USD respectively).

- Exchange of goods recorded in the South Banat region by municipalities (in mill. US dollars) in 2011:

No.	Municipality	Export I-III 2013.	Import I- XII 2013.	Balance
1.	Alibunar	770	1.824	-1.054
2.	Bela Crkva	1.056	141	915
3.	Kovačica	1.703	2.298	-595
4.	Kovin	10.816	9.544	1.272
5.	Opovo	1.034	361	673
6.	Pančevo	86.654	26.352	60.302
7.	Plandište	897	333	564
8.	Vršac	62.828	55.409	7.419
	South Banat	165.759	96.261	69.498

	January - March 2013.					
	Export			Import		
	2012.	2013.	Indeks	2012.	2013.	Indeks
TOTAL - Serbia	2.442,90	2.998,20	122,7	4.622,40	4.675,00	101,1
Vojvodina	935,2	983,8	105,2	1490,40	1.397,00	93,8
South Banat	146,54	165,76	113,1	94,62	96,26	101,7

- Exports from the South Banat region in I-III 2013:

Italy	Germany	Russia	Romania	Bos&Herz.	France	Turkey	Others
11%	22%	10%	6%	9%	4%	3%	35%

Southern Banat companies made the most of their export in the period between I and III month of 2013 to Germany, Italy, Russia, Bosnia and Herzegovina, Romania, France and Turkey. As for import, in the period between I and III month of 2013, major foreign trade partners were Germany (14.53 million dollars), Italy (12.02 million dollars), France (7.61 million dollars), Romania (6.81 million dollars), China (4.53 million dollars), Bosnia and Herzegovina (4.15 million dollars) and India (3.83 million dollars). Import from these seven countries makes 55% of total import made in the region in the observed period.

According to type of goods in Southern Banat export, top position belongs to medications, with export value of 29.66 million dollars, followed by polyethylene of specific density lower than 0.96 with value of 21.79 million dollars, polyethylene of specific density of 0.94 and more with value of 13.03 million dollars, propene (propylene) with 12.25 million dollars and other instruments and equipment for dialysis with 12.2 million dollars.

- The biggest exporters of the South Banat region in **I-III 2013**:

No.	Company name	Activity
1.	HIP-PETROHEMIJA a. d. Pančevo	plastics, primary forms
2.	HEMOFARM a. d. Vršac	production of pharmaceutical preparations
3.	HIP-AZOTARA DOO , Pančevo	production of fertilizers, nitrogen compounds
4.	FRESENIUS MEDICAL CARE SRBIJA d. o. o. Vršac	production of orthopedic devices and other equipment
5.	WEST PHARMACEUTICAL SERVICES DOO, Kovin	
6.	ALMEX DOO d. o. o. Pančevo	growing grain and other crops
7.	METAL LOGISTIC DOO PANČEVO	Re-use of selected materials
8.	UTVA SILOSI AD Kovin	production of metal constructions and parts
9.	ALUBOND EUROPE DOO Banatski Karlovac	production of metal constructions and parts
10.	DAHOP UTVA DOO , Kovin	material cold shaping

Apart from exporting plastic products, primary forms, production of fertilizers and metal structures, Pančevo's food industry also plays an important role in foreign trade. Grain mill products, grains, starch and starch products, have been exported the most. On the other hand, grain has been mostly imported.

Support to economy

The City of Pančevo provides support to companies by developing partnership relations and by strengthening cooperation between public, private and civil sectors, as well as through joint work in finding of sustainable solutions directed towards the improvement of business ambience. Direct support through monitoring and exploration of needs, analysis and provision of information related to economy is provided by the Secretariat for Economy and Economic Development. Proving its dedication to the listed goals, the Secretariat actively works on fulfillment of all conditions needed for successful completion of certification process of towns and municipalities with favorable business climate, implemented by the National Alliance for Local Economic Development.

Most important tasks which fall under competence of the Secretariat include drafting of programs and implementation of local economic development plans; improvement of general framework for the city economy, monitoring of status in the area of economic development and realization of cooperation with competent institutions and organizations at city, provincial and republic levels; monitoring and provision of information about current national and international competitions, participation in preparation and implementation of projects of importance for the City of Pančevo; creation of conditions for development and improvement of catering industry, crafts and trade, as well as tourism, such as categorization of houses, holiday apartments, suites and rooms for rent; deciding in first instance administrative procedures within its competences.



The Secretariat includes the following departments: Department for Local Economic Development, Department for Projects and Department for Economy.



Regional Chamber of Commerce Pančevo

The Regional Chamber of Commerce Pančevo is an independent, professional business association of companies, banks and other legal entities and entrepreneurs which conduct business activities in South Banat (Pančevo, Vršac, Plandište, Kovin, Kovačica, Bela Crkva, Alibunar and Opovo). Through branch associations and centers and the Assembly and the Board of Directors, it represents the interests of its members. The Regional Chamber of Commerce operates independently on the basis of the Law on Chambers of Commerce and within the unique system of chambers, on the basis set by the Agreement on interchamber cooperation and the Statute of the Chambers. It is an interest-based association of business entities where they meet and harmonize interests, establish mutual attitudes, share experiences and establish business relationships both at home and abroad. The Chamber monitors and analyzes economic trends, estimates economic conditions, influences decisions related to economic policy measures, monitors their effects and suggests possible corrections. It also provides technical assistance to its members in solving problems, affirms and promotes their production programmes through trade fairs and exhibitions at home and abroad and connects entrepreneurs with foreign partners through contacts with foreign chambers, representative offices and embassies.

In the South Banat region, which the Chamber is in charge of, there are 6,098 legal entities (2,801 registered companies and 10,112 entrepreneurs, employing more than 64,000 employees). Industry and agriculture enable the region to maximise its potentials to the most. Finally, one of the most important valuable assets of the economy is the constant surplus in foreign trade.

INVESTMENTS

Benefits:

- the lowest tax rate on corporate profit in Europe - 15%,
- the lowest tax rate on personal income - 10%,
- VAT - general/special rate - 20/8%
- ten years of tax exemptions for large investments,
- accelerated write-off of fixed assets,
- imports of production equipment is exempt from customs duties,
- free trade regime with Russia and the countries of South Eastern Europe – the CEFTA and
- stimulation of production activities through reduction of fees for construction land planning, based on the number of employees.

Enterprises	Country of origin	Activity	Expiry year	Type of investment
GAZPROM NEFT/ NIS RAFINERIJA NAFTE	Russia	Production of oil derivatives	2009.	Privatization
BAU HOLDING BETEILIGUNGS (STRABAG)/ VOJVODINAPUT	Austria	Construction of roads and other relevant traffic facilities	2003.	Acquisition
AVIV ARLON GROUP	Isreal	Real estate construction and development	2010 (first phase)	Greenfield
En-A1 GROUP	Slovenija	Real estate construction and managment	2009.	Greenfield

Infographic 07

Expenses



Besides the above-mentioned foreign investors, local businessmen also invest in their own production processes, in order to improve business and be competitive on the market. Those who have invested substantial financial resources include: “Petrochemical Complex” a joint stock company, “Starch industry Jabuka” a joint stock company, “Prokal” Ltd., “Pavle” Ltd., “Silex” Ltd., “Animal feed factory Jabuka” a joint stock company, “Znak ‘Ltd., “Brako Feroproduct” Ltd.



Water

Households EUR / m ³	0,46
Economic consumption EUR / m ³	0,86



Sewage

Households EUR / m ³	0,38
Industrial consumption EUR / m ³	0,72



Heating

Households EUR / m ²	0,77
Business premises EUR / m ²	1,06



Waste disposal

Households EUR / m ²	0,06
Business premises EUR / m ²	0,06



Internet

ADSL EUR / month	8,61 - 49,56
Cable EUR / month	14,65 - 35,45



Real estate prices

EUR / m ²	450 - 900
----------------------	-----------



Renting of flats / houses

EUR / month	50 - 200
-------------	----------



Business premises prices

EUR / m ²	600 - 900
----------------------	-----------



Renting of business premises

150 - 450
2 - 10



Incentives for investors at the local level

The city of Pančevo closely cooperates with the representatives of businessmen in the city, with the respect to their needs. This cooperation leads to the harmonization of local legislation in order to contribute to the development of a favorable business climate.

The following documents can be downloaded from the website www.pancevo.rs:

- Guide for the obtainment of construction permits
- Incentives for investors
- Locations for investments – interactive map

Property tax

Decision on Property Taxes stipulates rates of up to maximum ones prescribed by law (0.4%) as follows: property rights for tax obligor who maintains business bookkeeping of 0.40%; land use rights for tax obligor who does not maintain business bookkeeping of 0.30%; property rights for tax obligor who does not maintain business bookkeeping of 0.3%.

Local utility taxes

Fee for company declaration on business premises is defined differently depending on size of legal entity, type of business activity, amount of annual revenues, size of business premises and part of Pančevo where it is located. This fee is half lower in settlements than in Pančevo. Small legal entities are exempted from this fee, as well as entrepreneurs who do not make annual revenue of more than 50,000,000.00 RSD. Start-up incentives include exemption from this fee for legal entities who have been registered in SBRA for the first time, and such exemption refers to calendar year in which the registration is carried out. This fee is also not paid by obligors who generate electricity in power plants using solar and wind energy (renewable energy sources), registered agricultural husbandries, sports organizations, political parties, old arts and crafts, folk crafts, trade unions, churches, religious associations and communities.

As an incentive measure, the City exempts companies starting commercial activities from paying **environmental protection and improvement fee** in the year when such company is registered. In order to encourage favorable business climate and promote lower burden for companies making business in the City of Pančevo, this fee is reduced by 50 % for small and medium legal entities, by 70 % for owners or users of business premises used for production activities, and by 100 % for civic associations, sports organizations, other non-profit organizations and old arts and crafts.

Fee for regulation of construction land is reduced by 30 % for garages as separate commercial facilities and greenhouses; 30 % for the construction sport pitches temporary covered during the year; 75 % for commercial facilities where investors are agricultural husbandries.

Construction of new and legalization of existing business premises

Investors of new business premises intended for all production activities can exercise right on reduction of charges according to number of steadily employed workers by 10 % on each 20 workers, or on each 30 workers in charges are paid in installments; if the activity is realized through application of modern technologies, charges are reduced by 10 % on each 10 workers, i.e. 15 is charges are paid in installments.

Regulation of construction land by investor's funds

Charges are reduced by maximal 60 % for acknowledgement of costs for the construction of infrastructural facilities by the investor. In case of construction of next facility on subject plot or in complex stage construction which uses infrastructure constructed by the investor's funds, the remaining real amount of construction costs will be acknowledged. Reduction of 40 % is allowed if charges are paid in a single amount within 30 days from the entrance into contract between the investor and PC "Direkcija". It is also allowed to pay charges in maximal 24 monthly installments, in which case the investor will also be able to exercise right of reduction of 40 % for the remaining part of undue installments paid in consolidated, single payment.

Financial incentives

The Government of the Republic of Serbia

Based on Regulation adopted by the Government of the Republic of Serbia about conditions and manner of attracting direct investments, grants can be awarded to national or international companies for financing of investment projects in the production sector, service sector which can be subject in international trade, and for strategic projects in the area of tourism.

The funds cannot be awarded for financing of investment projects in primary agricultural production sector, caering industry, trade, production of synthetic fibers and coal.

State subsidies								
Investment projects for which funds are granted	Projects of special importance	Large-scale investment projects		Medium-scale investment projects	Production Sector		Services that may be the subject of international trade	Strategic projects in the field of tourism
					Investments in devastated areas and areas of special importance	Investments in other areas		
Amount of funds	Up to 17% of the total amount of investments	Up to 17% of the total amount of investments	Up to 20% of the total amount of investments	Up to 10% of the total amount of investments	4000-10000 EUR per new job opening	4000-10000 EUR per new job opening	4000-10000 evra EUR per new job opening	4000-10000 EUR per new job opening
Minimum value of investment	200 million Euros	100 million Euros and more	From 50 to 100 million Euros	30 million Euros	0,5 million Euros	1 million Euros	0,5 million Euros	5 million Euros
Minimum number of employees	1000	300		150	50	50	10	50

The Development Fund of the Republic of Serbia was established to encourage economic development, balanced regional development, an improvement in the competitiveness of the domestic economy, the development of artisanship and services, growth in employment and capital market development. The Fund's resources could be used by businesses operating in the Republic of Serbia: legal entities - privately owned companies, joint stock companies with majority of private ownership, newly-privatized companies with paid out state capital, and entrepreneurs.

www.fondzarazvoj.gov.rs

The National Employment Service offers a range of programs aimed at subsidizing self-employment as well as job creation. Employers wishing to employ persons falling within particular categories of the unemployed are entitled to exemption from payment of contributions to compulsory social insurance on the net salary, which are paid by the employer.

www.nsz.gov.rs

Government of the Autonomous Province of Vojvodina

Provincial Secretariat for Economy, Employment and Gender Equality awards grants to companies for financing of projects in the area of tourism, incentives for reimbursement of costs for participation in national and international fairs, assists in development of production activities of interest for economic development and so on.

www.spriv.vojvodina.gov.rs

Provincial Secretariat for Science and Technological Development, in accordance with the program of general interest for the Republic of Serbia, carries out the provincial administrative activities related to the following: encouragement of international cooperation and innovation activities; provision of funds for co-financing of specific innovation programs and infrastructure in AP Vojvodina; provision of funds for co-financing of basic research and research programs in the area of technological development in AP Vojvodina, for co-financing the participation of scientific and research workers and students in scientific conferences and specialization abroad, and for organization of scientific conferences in AP Vojvodina.

www.apv-nauka.ns.ac.rs

Development Fund of the Autonomous Province of Vojvodina participates in realization of programs and projects based on economic principles so as to achieve the following goals in its territory:

- economic development;
- agricultural development;
- encouraging the establishment of small and medium enterprises and development of entrepreneurship;
- encouraging of social entrepreneurship;
- encouraging of employment;
- encouraging of export;
- encouraging of even regional development;
- other programs and projects from the original or entrusted competences.

www.rfapv.rs

Provincial Agricultural Development Fund was established with the aim to encourage agriculture in Vojvodina, and to eliminate problems in the area of agricultural production through participation in financing of improvement and development programs in certain agriculture areas; encouraging of more intensive and continual production and provision of as many export goods as possible; encouraging of establishment and organization of companies in the area of agriculture; encouraging of development of agricultural cooperatives; proposition of incentive measures of systematic character at the provincial level.

www.fondpolj.vojvodina.gov.rs

Provincial Secretariat for Inter-Regional Cooperation and Local Self-Government

www.region.vojvodina.gov.rs

Fund for Investment Support in Vojvodina – ISV

www.vip.org.rs

Tax Incentives

The company profit tax in Serbia is 15 %, which is the lowest rate in the region. The law stipulates additional incentives such as tax exemptions, investment incentives, tax credits and accelerated depreciation.

Tax Exemptions

- A tax payer who invests more than 700 000 000 dinars (more than 1 billion dinars) into fixed assets and employs minimum 100 new employees, is entitled to profit tax exemption for a period of 10 years
- A tax exemption is also approved for concessions and work of non –profit organisations.
- Companies which open new employment posts will be exempt from paying all or part of taxes in the next 12 months, depending on the age of the newly employed workers.
- The companies which employ disabled people are granted a profit tax exemption which correlates to the number of disabled employees to total number of employees ratio..
- A 100 % tax exemption for obligatory social security taxes payable by the employer (total of 17.9 %) is granted for new employees older than 50 years and an 80 % tax exemption is granted for those older than 45 years. The incentive is valid for the first two years of employment .
- An employer who employs a person under the age of 30, registered with the National Employment Service, is exempt from payment of compulsory social insurance for a period of two or three years.
- An employer who employs a person with disabilities is exempt from payment of compulsory social insurance.

Other Tax Incentives

- Business losses in the fiscal balance sheet can be deducted from the profit in the forthcoming financial period for longer than 5 years.
- A five year period of tax exemption is given to companies which have concession investments.and is effective as of the date when the investment was finalised.
- Companies are entitled to the accelerated depreciation of some fixed assests.
- Imports of equipment which represent foreign investment are customs duty free.

More about these and other incentives on:

www.poreskauprava.gov.rs, www.vip.org.rs, www.pks.rs, www.siepa.gov.rs

Establishment of enterprise/ company

Starting a business/company

In order to start the registration procedure, **the Business Register Agency** form should be completed (Address: trg Nikole Tesle 5, Pančevo).

A tax of **4.500,00 dinars** should be paid for setting up a company and other forms of businesses, regardless of the type (partnership, limited liability partnership, joint stock company or some other type).

To set up a small business the following documents are required:

- Registration form (the form can be downloaded from the Agency site www.apr.sr.gov.rs),
- Personal identification photocopy
- and **1.200,00** dinars payment proof

Registration forms can be collected at the Business Register Agency (BRA), BRA branches or downloaded from the BRA site free of charge (www.apr.sr.gov.rs).

The forms

The information sheet on the construction permits, status of the application at the Secretariat and other information on getting the permit can be obtained at the **City Service Centre, desk 9**. Prospective investors can get the forms related to the activities of the Secretariat at the **desks 1, 2 and 3** of the City Administration Office or download and print them from the internet presentation of the Environmental Protection, City Planning, Construction, Housing and Utilities Services Secretariat.

Addresses :

City Service Centre – Trg kralja Petra I 2-4 (entrance from Petra Drapšina Street),

City Planning – Trg kralja Petra I 2-4 St., sixth floor,

Land Registry – Žarka Zrenjanina 19 ,

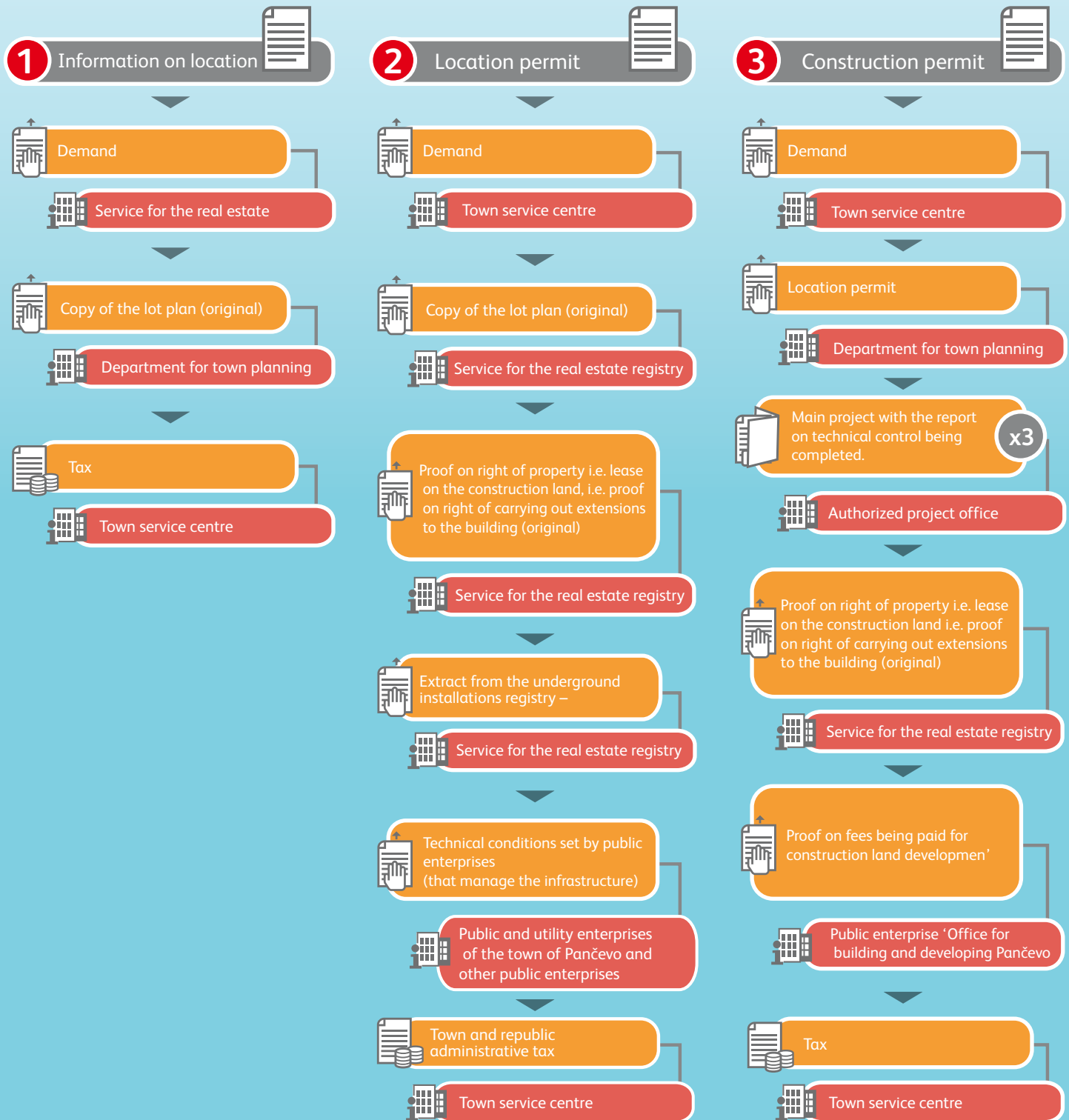
Public Company „Pančevo Construction and Regulation Office”- Zmaj Jovina 6,

City Construction and Housing and Utilities Office – 2-4 Trg kralja Petra I, sixth floor

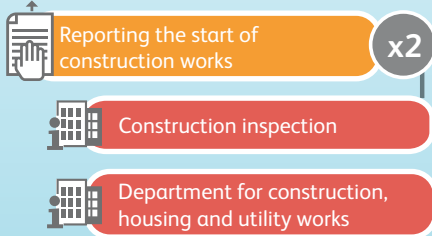
Construction Inspection Office – Trg kralja Petra I 2-4, seventh floor.

Infographic 08

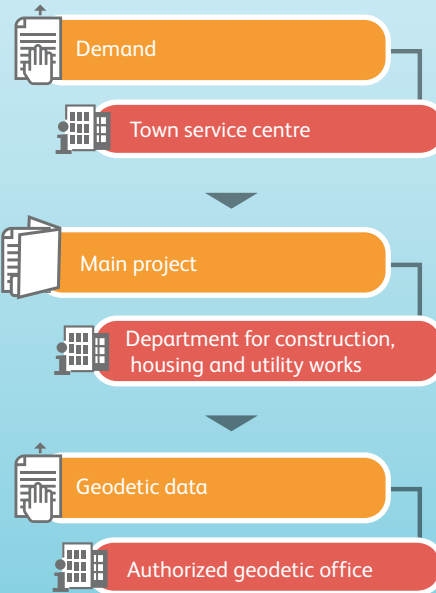
Information on issuing construction, housing and utility permits



4 Reporting the start of construction works



5 Technical inspection and permit



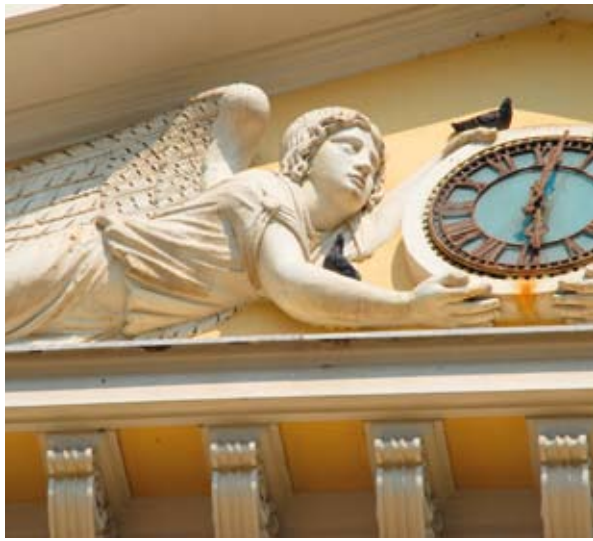
6 Approval of the lotting and relotting project



7 Demolition and removal of a facility







Quality of life

TOWN CULTURE

Pančevo is renowned for its vibrant cultural life, represented through the activities of 15 city cultural institutions: The City Library, The National Museum, The Historical Archives, The Cultural Heritage Preservation Institute, The Pančevo Cultural Centre, The Youth Hall and nine cultural centres in different settlements.

Besides cultural institutions, there are many art and culture associations, informal groups, citizens' associations and other civil sector organisations, all of which complement the cultural life of the city.

Pančevo was the first city in Serbia to adopt the City Cultural Development Strategy for the period 2010- 2015. Its vision is to make Pančevo part of the European cultural heritage with its different cultural identities, peace culture and constant development of the conditions for expressing different cultural forms. The mission of this important strategic document is to preserve and develop cultural heritage protection and create new values which contribute to the development of civil society and a stimulating atmosphere for the work of different agents of the city's cultural life. The areas of cultural development include: cultural heritage preservation, revival of industrial heritage, accessibility and openness of the cultural institutions, transformation of youth halls in the settlements, cultural exchange, festivals, multiculturalism, intercultural dialogue, development, creating the audience and alternative stage.



Library

The records on the Pančevo City Library date back to 1923. It became an independent institution in 1944. Its activities include the collection, preservation and lending of books, promoting reading (events „Give a Book and Be Cool“, and „ A Book and a City“ as part of the „May Book Days“ festival), information activities, publishing and printing (publishing the professional journal „The Pančevo Readers“. The Library has 200 000 publications and about 12 000 members. It also has an e-library and gallery. Pančevo has one main city library and nine libraries at the youth halls in the surrounding villages.

www.biblioteka-pancevo.org.rs



The Archive

The Historical Archive was founded in 1947 and is one of the biggest institutions of the kind in the country. It is located in the Austro-Hungarian army barracks built in 1875. The total length of the archival displays on the shelves would stretch to 9 kilometers. The most valuable one is the Magistrate Fund, with the archives from the period 1794-1872. This institution is responsible for the preservation of the archives on the territory of four municipalities (Kovin, Kovačica, Opovo and Alibunar). Additional activities of the Archive include exhibitions in its gallery, the most prestigious ones being the two international arts events Serbian Drawing Biennale and Ex Libris. The Historical Archive is very active in publishing activities and reprinting of successful editions from the archives.

www.arhivpancevo.org.rs

Museum

The Museum is situated in the impressive building of the ex Magistrate, built in 1833. It preserves cultural heritage on the history of Pančevo and its surroundings. The Museum was founded by Phd Borislav Jankulov in 1923. Permanent exhibitions in the Museum include The Portrait Gallery from the 19th century, The Paintings from the First Half of the 20th Century, „Pančevo 5” Arts Group Paintings, The Contemporary Pančevo Paintings from the 80s and the 90s of the 20th century. The 19th century interior, while the exhibits from the collection of the applied arts are a separate presentation. One of the most valuable art exhibits in the Museum is the large painting of Paja Jovanovića „The Exodus of the Serbs”. The Museum’s legacy is testament to the outstanding cultural life of Pančevo between the two world wars, the center of which was in the Aleksić-Smederevac house. The art history, history, archaeology, ethnology divisions, permanent exhibition and the gallery all work under the auspices of the Museum. It also publishes „The Banat Museums Gazette”. The National Museum owns 37.000 objects from more than 200 registered archaeological sites. The National Museum also plays an active role in the organisation of the international event The Museum Night .

www.muzej-pancevo.org.rs



The Cultural Heritage Preservation Institute

The Pančevo Cultural Heritage Preservation Institute was founded in 1978 godine as the cultural heritage preservation office of the city Museum. It became an independent institution in March 1993. Its activities cover the territory of eight municipalities in the South Banat (Pančevo, Vršac, Kovin, Bela Crkva, Alibunar, Plandište, Kovačica and Opovo). On this territory there are over 100 important cultural monuments, three of which are on the territory of Pančevo.

Address: Žarka Zrenjanina 17, 26000 Pančevo, phone: 013/351-472 i 348-487; zavod@panet.rs

The Cultural Centre

The Pančevo Cultural Centre was founded in 1963. Its activities include the organisation and production of the cultural and arts programmes. The Cultural Centre programme can be divided into film, theatre, music, visual arts, publishing and production . The Centre is the main organiser of the important events in the following areas

- Visual arts: The Art Biennale, with a tradition of more than 30 years, The Children Art Biennale „BUDI” and The Pančevo Gallery, with a tradition of more than 40 years;
- Development of the local cartoon production: the GRRR!, programme led by Saša Rakezić (Aleksandar Zograf), our most important artist in the field;
- Music: The Jazz Festival, with a 14 years long tradition, Etno.com, the traditional music festival.

The professional theatre production for children and adults is an important part of the Centre’s activities. The „Arko“ string quartet, the Contemporary Gallery, „The Backyard“ gallery and the „Electricity“ alternative theatre operate within the auspices of the Centre. The Cultural Centre received important awards and was recognised for its activities in publishing, production and exhibitions.

www.kulturnicentarpanceva.rs



The Youth Centre

It was founded in 1975. Its activities include the organisation of educational, cultural-entertainment youth programmes, film workshops, school of drawing and providing support to the music bands. The following events have been organised by the Centre for many decades:

- meeting of the young writers from ex-Yugoslavia and the publication of the „Manuscripts“ anthology of poetry and short stories, an event with a 34 years tradition;
- The Rock fest musical festival for the rock fans;
- In Trash Festival of the short amateur metre;
- Ex Theatre Fest festival of the alternative theatre, which has been organised for more than 30 years under different names.

The music studio „Pandemonium“ works as part of the Centre. New still not popular bands can use its equipment, and the result of these activities is the rich Centre’s music rich production.

www.domomladinepancevo.com



Cultural Centres

Cultural activities in all nine settlements have been organised for more than half a century through cultural centres, and the centres have been set up to cater for the cultural needs of the local population, respecting specific local traits. The most important programmes relate to the preservation of local traditions, language and customs because of the multiethnic and multicultural nature of the majority of the settlements (Jabuka, Banatsko Novo Selo, Dolovo, Ivanovo, Kačarevo). Their aim is to present those cultures to wider population. It is worth mentioning that it is thanks to the long tradition and work of the cultural centres that the process of urbanisation of the settlements was fostered, and cultural events made more accessible.

The Starčevo Cultural Centre organised the prestigious international music the „Starčevo Tamburitza“, in which many string musicians. „The Bohemian“ gallery which promotes the arts, also works under the auspices of the Cultural Centre.

Address: 2 Pančevački put, 26232 Starčevo, telephone: 013/631-128; dkstarcevo@yahoo.com

The Omoljica Cultural Centre has been organising the „Žisel“ festival for more than 40 years. Its main theme is Rural Life and it promotes the amateur photographers and directors of documentaries. It is one of the oldest Serbian Film Festivals.

Address: 1 Trg Svetog Save 26230 Omoljica, telephone: 013/617-005; domkulture@krstarica.com

The Banatski Brestovac Cultural Centre provides help to the „Ponjavica“ Film-Photo Club in the organisation of the city event „The Nature Days“, which promotes art photography, the development of ecological awareness and the development of the environment.

Address: Pančevačka 66, 26234 Banatski Brestovac, telephone: 013/626-133 and 626-188.

The Ivanovo Cultural Centre was founded by the “Dunavac” Photo Club, which jointly organised the photo exhibition „Ivanovo in Focus“. The picturesque Ivanovo catches attention of the viewers, so it is no wonder that photo-safari is organised in it.

Address: Dože Đerđa 62, 26233 Ivanovo, telephone: 013/629-129; marko.guran@gmail.com

The Dolovo Cultural Centre has long tradition in fostering folklore and music arts of all ethnic communities, especially Romanians. “St. John`s Flowers“ is the oldest children`s folklorle and music event of its kind organised in this place.

Address: Kralja Petra I 36, 26227 Dolovo, telephone: 013/634-006; biblioteka.dolovo@gmail.com

The Banatsko Novo Selo Cultural Centre is one of the most active centres with its many programmes which bring together different minorities. In particular Romanian theatre and music arts are nurtured.

Address: Maršala Tita 37, 26314 Banatsko Novo Selo, telephone: 013/615-114; dkbns@donet.rs

The Jabuka Cultural Centre organises programmes which foster children art. The cultural-art associations preserving the language, customs and culture of Macedonian and Roma ethnic communities are also active.

Address: Ive Lole Ribara 2, 26201 Jabuka, telephone: 013/624-067; dkjabuka@madnet.rs

Glogonja Cultural Centre develops different programmes on its new premises, thus promoting the cultural diversity and specific traits of its local community.

Address: 1. maj 82, 26202 Glogonj, telephone: 013/627-115; dkglogonj@yahoo.com

Pančevo – the city of culture!

City events

Type	Name	Organiser	Time
Important dates	City day	The City of Pančevo, Cultural Centre	November
Religious Holidays and Celebrations	Christmas Eve	Serbian Orthodox Church, City of Pančevo	January
	Christmas Concert	Catholic Church, City of Pančevo	December
	The Saint Sava Academy	Serbian Orthodox Church, City of Pančevo	January
	Easter Concert	Serbian Orthodox Church, Catholic Church, City of Pančevo	April
	The Days of Priest Vasa	Serbian Orthodox Church, City of Pančevo	June
	The Spiritual Music Days	Serbian Orthodox Church, City of Pančevo	November
Musical Entertainment and Folklore Events	Musical Spring	Musical Centre	March
	Rock Festival	Youth Hall	August
	Etno.com*	Cultural Centre	September
	Starčevo Tamburitza*	Cultural Centre Starčevo	October
	Etno glas*	Youth Hall	November
	The Fanfare Festival	BN Village Community Centre	August
	Jazz Festival*	Cultural Centre	November
	The Accords of Gasha	Creative Cultral Club Starčevo	February
	Reggae Festival	Youth Hall, Trenchtown rockers	November
	The Harvesters' Days	Community Centre Vojlovica	June/July
	Bikers' Meeting*	Coyotte Moto Club	July/August
	Ivanja Flowers*	CAA Aksentije Maksimović	July
	Pančevo Carneval*	Association of the Pančevo Friends	June

Festival of Food and Drinks	Bacon Festival	Tourist Association of Kačarevo	February
	Paprika Festival	Banatski Brestovac Community Centre	August
	Ham Festival*	Omoljica Community Centre	March
	Wine Festival	Dolovo Community Centre	February
Musical Entertainment and Folklore	The Nature Days	The Ponjavica FPC	June
	May Book Days	City Library	May
	Ex Theatre Festival*	Youth Hall	June
	Deliblat Sand Art Colony	Cultural Education Association	July
	Žisel	Omoljica Community Centre	August
	Referact	AKK BN Village and CC BN Village	August
	Festival of Digital Art	Little Nemo	December
	In Trash	Youth Hall	December
	Internacional Festival of Submarine Movie*	Club of Submarine Activities	March
	Manuscripts	Youth Hall	April/May
	Art Biennale*	Cultural Centre	September/October
	Children Art Biennale	Cultural Centre	May/June
Ex libris	Historical Archive	End of year	

* regional and international events



Sports

**Welcome to the city of sports and sports people!
Welcome to the city of world champions!**

Pančevo has long tradition of cherishing sports culture and it is a city with over a hundred of sports clubs in which famous Serbian sportsmen and sportswomen were have, trained.

The list of outstanding sportspeople who made this city known worldwide is endless. These are just some of them: Branislav Petrić and Karolj Lajko (boxing), Stevan Bena (football), Branislav Pokrajac, Ljubomir Obradović, Dejan Perić and Žikica Milosavljević (handball), Milenko Topić (basketball), Vesna Popović (volleyball), Marina Munćan (athletics), Dušan Novakov (rugby).



Perić and Milosavljević were proclaimed best ones in the world in their positions in the team, and when talking about individual sports, Predrag Stojadinov brought world gold medal to Pančevo as an absolute category karateist, while most successful world sport starst include swimmer Nadja Higl, competing in 200m breaststroke; Slobodan Bitevic as karateist of up to 84 kg and Dušan Borković, most successful Serbian driver.

At the moment, the volleyball players of the „Dinamo“ and the basketball players of the „Tamiš“ play for the national teams while the Starčevo „Borac“ handball players are next to them in rank. The disabled are also offered the possiblity to play sports through several clubs and organisations „The Marble“ and the „Sportiko“ sports clubs for disabled children and yound adults, the Association of Sports and recreation „The Big And The Small- Inclusion“, the MNRO – association for the disabled and the Cerebral Paralysis Patients Association.

The extreme sports and modern sports clubs such as the mountain climbring, bike and skate clubs prove that the citizens of Pančevo are also adventure lovers. „The Vest“ and „The Falcon“ mountain climbring associations have many memebrs

City administration also founded the “Mladost” Public Utility Company which is in charge of sports utilities and sportsgrounds in the city, based mainly in two sport-recreational centres: the SRC “Mladost” and the SRC “Strelište”. The Centre for Sports Development works as part of this company. It organises testing physical ability of the boys and girls who would like to go in for sports.

The first of the two centres, the **SRC „Mladost”**, is situated on eight hectares. It has one main and one side football fields, then handball,basketball, volleyball fields and tennis courts – famous Novak Đoković won one of his first tournaments on one of our tennis courts! The running track was remarked recently, so that many recreation lovers use it to run through the evergreen forest. The management building and a high qulity privately owned restaurant are also parts of the centre.



The „**Strelišće**“ (13 hectares) consists of the Sports Hall (3.844 m²), with the stands to accommodate up to 1000 visitors, which is sufficient for the team sport matches played by the local clubs, as well as the open (1.100 m²) and closed (2.707 m²), swimming pools and handball-basketball and football fields. Field with artificial grass was laid recently so that many sport clubs can use it.



The management building and main football field, the running track, boxing, kayak and rowing clubs are all situated in the **City Stadium** (three hectares). Small stands are on the northern side, the side football field is on the eastern side and the handball field is on the west side.



Taking into account that about 130 000 citizens live in Pančevo and in surrounding settlements, many of whom have the need to be physically active, as well as undoubtedly high level of sports development in the city, lack of sports facilities and fields is more than evident. But the Pančevo authorities have started preparation of the strategic documents which would facilitate the city development and well being of its citizens. The City Parliament adopted The Sports Development Strategy until 2014., which represents the base for future progress. Pančevo is a city in which children can practice sport free of charge, with the tendency of becoming the regional sports centre with developed infrastructure, in which the talented and successful are supported. Pančevo is intended to be the city in which sports development is an important factor of overall progress.

Pančevo – a city with inspiring sports spirit!



Free time and entertainment

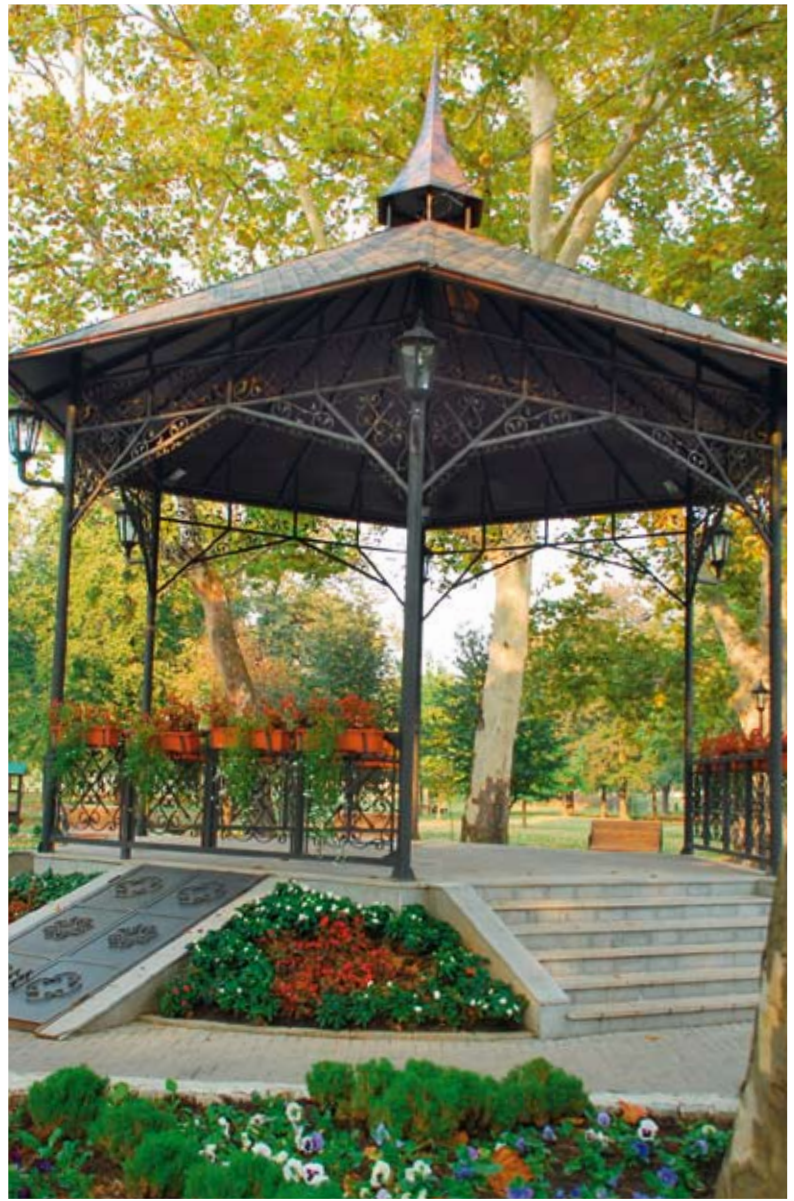
Parks

Pančevo is situated on river banks providing opportunities for active vacation, with developed cycling and hiking along the banks.

Narodna bašta (Popular Garden), the biggest park in Pančevo, was established in 1829 according to the idea and design developed by brigade general Mihovil Mihaljević, who wanted that Pančevo obtains park similar to other cities in Central Europe. Since its establishment, it has passed through four reconstructions.

A very important year for the park was 1995, when it hosted great World Agricultural and Industrial Exhibition, aimed at presenting Pančevo crafts agricultural products and industry to Balkan and Europe.

Works on the latest reconstruction started in 2008 when the area of former plant nursery was prepared in form of extensive earthworks, clearing works and extension of the park to additional 5 hectares. The most valuable property of Narodna bašta is its diverse bio-resources. The most precious specimens of tree *Quercus robur* – pedunculate oak, is estimated to be older than one hundred years.



The park has several children playgrounds, equipment for fitness in open air, jogging path of 1,150m, music area, café gallery, and is equipped with new infrastructure and furniture.

The Barutana (Gunpowder) Park used to be a military facility, nowadays a park under construction – park for extreme sports. The construction of the park started in 2011, and so far trails have been constructed, as well as plateaus, new infrastructure, lighting, public fountains, benches, modern skate park, and currently first concrete artificial rock is under construction for sport climbing in Serbia. The park will also have a multi-functional amphitheatre, open-air gym and playground for older children.

Goranski (Scout) Park covers an area of 4.5 ha and is situated between the settlements of Tesla, Kotez and Misa, in vicinity of railway station Pančevo varos. This park was established in 1970s by the then activists of Scout Movement of Pančevo.

Reconstruction of **Railway Park** was completed in 2010 and since then it has been functioning as park area with all related infrastructural elements (trails, lights, furniture (benches, bins)).

Pančevo – the city of green parks!



Restaurants and cafés

Welcome to the city full of cafes and restaurants with rich national and international cuisine!

Welcome to the city with lively night life!

The Pančevo guests can always expect to have a good time in the city by the river. Regular visits of our Belgrade neighbours can only confirm this. They visit the restaurants in large numbers and enjoy excellent club atmosphere during weekends. The restaurants “Šaran”, The “Citadela” and “ Mladost” stand out for their quality and long tradition. During last ten years “The Poco Loco” and “Vetrenjača” joined this group of restaurants with their gastronomic offer and excellent service. They catch the attention of all of those who cross the Tamiš bridge on entering Pančevo.



“Coupe” is certainly the first association when clubbing in Pančevo is mentioned, not only because it was the first café in this part of the world – it was only 24 square metres and it was full all the time back in 1981 when it was opened – but because it is still full of guests although it was renovated three times and is much bigger in size now. This club has always been the place in which new world music could be heard, and the club live music in the city became more frequent thanks to the “Coupe”.

Besides being the symbol of 30 generations in Pančevo, the „Coupe” is one of the chief factors of the city development. Braća Jovanović Street was just a side, dusty street. Now it is a modern street going down to the river bank , full of different restaurants. The famous “Wagon” and the “Tower” cafés , just like majority of the restaurants are just by the Tamiš. In Njegoševa Street in the central pedestrian zone there are shops and among the cafés the most popular one is the „Bianco” café.

In addition to numerous parks, walking trails and squares (Njegoš street, Trg slobode (Square of Liberty), Gimnazijski trg (Grammar School Square), Kej (Quay), Trg Kralja Petra I (King Peter I Square), Trg dr Zorana Djindjića (Dr Zoran Djindjić Square)), one of favorite gathering place for Pančevo citizens is also Aviv Park Pančevo, the first retail park in Serbia, offering shopping in most famous world shops and entertainment for the whole family. The park is open every day from 10 to 22h.



Pančevo – the city which will certainly give you a nice surprise!



Social and Medical Care

The “South Banat“ Medical Centre is the regional hospital for Pančevo and neighbouring municipalities and settlements. The Pančevo Health Centre offers first level of medical care for about 128 000 citizens of the Pančevo territory.



The following social and medical care centres operate in Pančevo:

- Hospital
- Medical Centre
- Public Health Institute,
- The „Pančevo” Pharmacy,
- The „Solidarnost” Social Centre,
- The “ Gerontological Centre” for housing and care of the elderly,
- The “ Spomenak” centre for children without parental care,
- The “Dom slepih” centre for the blind,
- The “ Jabuka Srce” home for the mentally challenged in,” Jabuka,
- The „ Neven” day care for the disabled children, part of the „Mara Mandić” School,
- Clubs for seniour citizens
- The “ Dečja radost” Kindergarden

Pančevo – the caring city!



Information

The “Pančevo” Radio and Television

The RTV “Pančevo” Public Broadcast Company was registered for broadcasting television and radio programme as well as for production and publishing. The TV “Pančevo” broadcasts its programme on the channel 37 and is a local television. The “Pančevo” Radio broadcasts its programme on 92,1 MHz as a regional radio station, covering the territory of the municipalities of Pančevo and Kovin.

The TV “Pančevo” programme was watched on 16 december 1992. for the first time. The programme structure was changed in March 1997. when it became the public broadcast service of the Pančevo citizens.

In the turbulent times the TV “Pančevo” played an important role in the objective reporting on all relevant topics of the everyday life of the Pančevo citizens. Very important feature of this media house since 2000 have been the national minorities programmes broadcast once a week for 30 minutes in the Slovak, Romanian, Hungarian, Macedonian and from recently Roma language (which is still in experimental phase). In this way, the TV “Pančevo” greatly contributes to the preservation of languages and culture of the ethnic communities, promoting intercultural dialogue (the programme has Serbian subtitles) and fostering multiculturalism.

Today, the TV “Pančevo” broadcasts about 22 hours daily from its recently reconstructed building, out of which 31 %-33 % of programmes come from thier own production. The TV “Pančevo” is most popular for its news programme.

The Radio “Pančevo” started its operation on 1 May 1980. During turbulent events in Yugoslavia in the late 80s, the Radio “Pančevo” started following the events in all country. More than 200 intellectuals, polticians, artists and other people were guests in the radio programmes at that time. Its reporters were reporting live during demonstrations on 9 March 1991. When the wars in Croatia and Bosnia started, the Radio “Pančevo” again reported on the events, with clear anti-war editorial policy.

During NATO bombing of Yugoslavia in 1999 after Radio B92 was closed, and just one week after the first bombs hit, the Radio “Pančevo” became the most listened radio station in the capital and its programme was rebroadcast in many Serbian towns.

The RTV “Pančevo” was awarded the “Jug Grizelj” Award in 1998. and the Vienna International Press Institute Award for reporting in 1999. The same year this media house was also awarded the “October Pančevo Award”, then TV Novosti (Dušan Duda Timotijević) Award and the “Resistance” movement recognition.

www.rtvpancevo.rs



The “Pančevac” Weekly

The city of Pančevo is proud to have the „Pančevac” weekly, which is the oldest newspaper in Serbia. It was started by Professor Jovan Pavlović, a liberal and democrat in 1869, and who was arrested many times for his publicly expressed freedom ideas. Because of its independent editorial policy, the weekly was banned on many occasions.

After the Second World War the „Pančevac” was printed again, and its founder this time was the National Front, later known as the SSRN. In the last two decades, the weekly went through turbulent periods. First, in the beginning of the 90s of the last century, the local SPS politicians sacked group of the journalists who were considered to be unsuitable. In the subsequent years, some of them got their job again. In 2008. the weekly was sold to a private consortium. Because they did not fulfill their financial obligations, the privatisation contract was annulled in 2010. The Agency for Privatisation of the republic of Serbia still manages the weekly, and is its representative for the part of capital owned by the state.

All the time, except in the short period of the socialist rule, the editorial policy was independent which is the main reason that the „Pančevac” with its weekly circulation of 13 500 copies and 15% of unsold copies is still the most read weekly in this part of the world! Ten professionals work on full time basis in its office today, and total of 18 people work for the weekly. People in Pančevo celebrate every Thursday- that is when new „Pančevac” edition comes out.

**Welcome to Pančevo,
with century and a half tradition of free journalism!**



Cultural Diversity of Pančevo

Numerous traditional city events organised for many decades represent the cultural diversity presented through the activities of the institutions, associations, activities of the actors. All of them contribute to changing Pančevo reputation of the ecological black spot. Every year, different events and programmes (over 40) in which many people participate are organised, which attract big audience who have good fun and at the same time can learn more about the way of living not only in the city but in other settlements as well.

Year	Total	Serbs	Germans	Yugo-slavs	Hungari-ans	Slovaks	Mace-donians	Monte-negrins	Croats	Others
1910.	20.808	41,88 %	35,89 %	0,00 %	16,17 %	1,17 %	0,00 %	0,00 %	0,65 %	4,24 %
1991.	72.793	72,57 %	n.p.	8,75 %	5,56 %	2,20 %	2,40 %	1,88 %	1,35 %	5,29 %
2002.	77.087	79,08 %	n.p.	2,35 %	4,25 %	1,82 %	1,55 %	1,03 %	0,92 %	9,00 %

Pančevo fosters coexistence of different ethnic and religious communities through its long history and cultural tradition. Multiculturalism and intercultural dialogue are established through the activities of many civil associations, cultural-art associations which promote existence of different cultural expressions and persistent application of human rights through preservation of cultural identity of over 26 different ethnic communities (Macedonians, Romanians, Hungarians, Slovaks, Croats, Bulgarians, Muslims, Ruthenians, Germans) who, according to the 2002. Census constitute 21 % of the total population. It is worth mentioning some of them: CAA „Petefi Šandor”, CAA „Tamaši Aron”, SKPD „Đetvan”, Local Community Board „Matice Slovačke, Vojlovica, Pančevo”, CAA „Vasil Hadžimanov”, MCAA „Bonaz Šandor”, Roma Association CAA „Black Pearls”, Roma Humanitarian Association „Brothers”, South Banat Roma Association, folklore „Happy Heart”, DAK Association, „The Rainbow” Women Association of different nationalities, „Žmig” Women Peace Group, Euroregional Centre for civil society development in multiethnic areas „In medias res”, Jewish Municipality, „Šalom Tora” Jews Association, „BanAT-UL” Association, „Vardar” Macedonian Minority Association.

Other numerous associations complement the cultural life with their activities: Cultural-educational community, Drama Studio „The Studio of the Young”, Drama Studio „Čarli”, CAA „Stanko Paunović – NIS Rafinerija nafte Pančevo”, CAA „Abrašević”, WCAA „Jedinstvo”, Serbian church choir, CAA „Aksentije Maksimović”, Music Centre, Art Club „Dukat”, Artists Association „The Lighthouse”, Women Association „Panonke”, Association „Dolovke”, Regional Centre for the Talented „Mihajlo Pupin”, Association „Friends of i Pančevo”.

Private initiatives in the cultural life of the city are realised through: Agency „15 Minutes Pictures”, „Talking Wolf Productions” d. o. o., Agency „Bard”, Gallery „Madam” at the „Club 100” and other.

There are two art schools in the city: the „Jovan Bandur” Music School and the „Dimitrije Parlić” Ballet School.

Interethnic Relations Council was founded on 20 February 2009. with the aim of dealing with the issues of achieving, preserving and developing of the ethnic equality as stipulated by the law and the Pančevo City. Representatives of the Serbs and national minorities with more than 1 % representation in the last Census of the Republic of Serbia are the Council members.

Goran Trailović is the Council President.

Pančevo – city in which differences are respected!



The publication was made by:

Filip Mitrović, Ivana Orlov Gajan, Anđelija Cvetić, Snežana Baralić Bošnjak, Marija Ćurčin, Čedomir Markov, Marina Miljuš, Vladimir Vukajlović, Ivan Zafirović, Siniša Trajković, Zoran Stanižan, Jasenka Marko, Marina Kahrić-Lazić, Slavko Petrov i Anđela Vila.

Special thanks to:

The Regional Chamber of Commerce Pančevo
National Employment Service – Pančevo Branch.

Translation:

International House Syllabus Language School
Balkanska 23
Beograd

Design

Studio Infinity

Printing:

Alkan M - Pančevo

Copyright **Grad Pančevo, 2013.**



Pančevo City

Trg kralja Petra I 2-4

26000 Pančevo

Telephone: +381 (0) 13 345 417

Fax: +381 (0) 13 343 827

e-mail: grad@pancevo.rs

www.pancevo.rs

Secretariat for Economy and Economic Development

Department for Local Economic Development

Telephone: +381 (0) 13 308 824

Fax: +381 (0) 13 355 480

e-mail: ler@pancevo.rs



www.pancevo.rs



CITY OF PANČEVO